

WEATHER

Thursday, June 8	Min.	Max.	Precip.
Friday, June 9	43	76	0.00
Saturday, June 10	48	73	0.00
Sunday, June 11	55	85	0.00
Monday, June 12	49	84	0.33
Tuesday, June 13	40	65	0.00
Wednesday, June 14	42	68	0.00

ONE HUNDRED-NINTH YEAR—No. 1

12 Pages This Week

Plus 4-Page Supplement

CHELSEA, MICHIGAN, THURSDAY, JUNE 15, 1978

15c per copy

SUBSCRIPTION: \$6.00 PER YEAR

The Chelsea Standard

QUOTE

"Truth is as impossible to be soiled by any outward touch as the sunbeam."
—John Milton.

New Firestone Retread Plant Open By July 1

With remodeling in its completion stages, the new Firestone Tire and Rubber Co., Inc., Retread Plant, 20401 Old US-12 W., is expected to begin limited production by July 1 according to plant manager Dale Maurer.

Proceedings to buy the Chelsea building began more than a year ago by the Akron, O., based Firestone Co. with purchase finalized last August. Since August, construction workers for the Hippopotamus Construction Co., Ann Arbor, have been redesigning the 16,000 sq. ft. building - knocking out walls, putting up walls, and laying floors - for its new use. The work has continued even through the winter months, Maurer said.

Approximately 20 workers are being sought for positions of truck drivers, plant work, and office help, while two or three employees from the Firestone Saginaw and Lansing retread plants, including Maurer, will relocate to the new location. "We are running ads now for hard working individuals looking for permanent employment," Maurer commented.

According to Maurer, the Chelsea location was chosen "because of its proximity to the Detroit area where there are many established Firestone outlets for retreaded tires."

The Chelsea plant will house equipment from both the recently closed Saginaw plant and the soon to be closed Lansing plant. "We are consolidating the two plants into Chelsea for more efficient operation," Maurer explained.

Although Maurer would not say what the anticipated revenue would be from the Chelsea operation, he did say that the "demand for retreaded tires is way above supply" which he explained was a result of the fact that "not all used tires are suitable for retreading. Car and truck tires that we retread must meet the 1972 Federal guidelines," he added.

The retread plant does not sell retail, Maurer said, only to established Firestone dealers. Currently Chelsea does not have an established outlet.

Maurer has worked for Firestone for 22 years in a number of locations, most recently as manager for the Lansing retread plant. While he is presently dividing his time evenly between Chelsea and Lansing, he will be moving to Chelsea soon and said he is "looking forward to moving back to a small town. I grew up in a small town but I've spent many years living in a large city; it'll be nice to move to Chelsea," he said.

19 Teams Competing In Softball Leagues

Two weeks into the season, Chelsea Recreation Department adult softball leagues are in full swing with 15 slow pitch and four fast pitch teams vying for the title.

"Several teams have already shown themselves to be strong contenders for the championship," Andy Hurst said. In fast pitch, Ann Arbor Centerless and 3-D each won their first two games. On June 7, 3-D took an early lead behind timely hitting and the sharp pitching of Ken Schiller, but Centerless chipped away at the lead and won the game, 7-6, with two runs in the bottom of the seventh inning.

In slow pitch, six teams remain undefeated. McCalla's and Village Motors are each 3-0, and have dominated their games with large winning margins.

Jiffy Mix and Unadilla Store are both 2-0, while the Ann Arbor Eagles and Chelsea Bank-Greenhouse have all won their only game. Slow pitch games have featured a number of high scoring contests early in the season with the next one scheduled for Tuesday, June 20, when Village Motors hosts McCalla's at 7:30 p.m.

That same evening, Jiffy Mix meets Chelsea Bank-Greenhouse at 6 p.m.

Fast pitch games are played every Wednesday at 6:30 p.m. and 8:30 p.m., while slow pitch games are on Tuesdays and Thursdays at 6 p.m.; 7:30 p.m., and 9 p.m. The two leagues alternate on Monday. The season will run until the end of July when league championship will be determined in a playoff.

Summer Rec. Dept. Offers Four Classes

Four classes offered through the Chelsea Recreation Department this summer include macrame, open recreation, ceramics and aikido. Course descriptions, fees and meeting times are as follows.

Course: Macrame.
Instructor: Liz Hodge.
Location: High school.
Begins Wednesday, June 21 for six weeks on Wednesdays.
Time: 7:30-9 p.m.
Fee: \$10.

Course description: Make and design a variety of macrame plant hangers and other indoor and outdoor fixtures.

Course: Open Recreation.
Location: High school gymnasium.
Begins Monday, June 19 for six weeks.

Driver Education Classes Underway With 210 Enrolled

Approximately 210 students have enrolled in the first of two driver education programs offered this summer. Classes started Monday June 12 and will last until July 10.

A few openings are available for the second session to begin July 10 and continue until August 1. Following minimum guidelines set by the state, students will spend 30 hours in the classroom, 10 hours behind the wheel, and (Continued on page 16)



PREVENTATIVE DENTAL CARE: More than 119 Chelsea students have signed up for the annual fluoride clinic sponsored by the Jaycee Auxiliary. Here, Laura Scriven, 4th grade student at North school, is examined by Dr. Robert Burns, Jr., DDS, in the Beach Middle school clinic. Laura will have her teeth cleaned by Jill Quackenbush, left, dental hygienist for the Michigan Department of Public Health, and a layer of fluoride will be applied. Assisting

in the clinic is Mrs. Philip Hume, right. For optimum results, four visits are necessary to the 10-day clinic, according to Jaycee Auxiliary chairperson for the clinic Mrs. Robert Wheaton. According to statistics, sodium fluoride may reduce cavities by 40 percent if children receive regular treatments as preschoolers, 2nd, 5th, and 8th graders, Wheaton said.

Kiddies Parade Is Scheduled By Rec. Dept.

Kicking off the summer season with an all-day village parade, children ages 5-13 who are registered in the Recreation Department Summer Day Camp program will be able to do so through the newly established Community Education Program, Charles S. Cameron, superintendent for the school district announced.

In addition, area students of all ages will be asked for their input into the selection of classes which will be offered through the community education segment of the program.

A decision to initiate the program came during the board of education meeting, May 15. During that meeting, board approved the recommendation of Superintendent Cameron to institute a Community Education Program for 1978-79 and, at the same time, offered a contract to Jaclyn Rogers as director of the program.

"I am anxious to begin working with community residents to identify academic, enrichment, and recreational needs to design the new program," Rogers commented.

Rogers explained that a Community Education program "primarily reflects the educational needs and desires of a particular community. The emphasis becomes one of instituting the lifelong learning philosophy of education via the use of public schools and other valuable community resources."

Currently, more than two-thirds of the 500 school districts in Michigan have full-scale Community Education programs. "Michigan remains the leader in this dynamic national movement in the field of education," Rogers said.

Specifically, the program components may include pre-school classes, classes co-ordinated through the recreation department, a specialist degree and professional Mott Internship at Eastern Michigan University's Center for Community Education. Prior to the internship, Rogers was a Community School Co-ordinator for Bedford Public schools. She will assume her responsibility on July 1.

Rogers added that a full-time secretarial position will be available July 1. Applicants must be currently unemployed and a resident of Washtenaw county, she said. To apply, call Fred Mills at the Chelsea school district for an interview. Responsibilities include typing and office management. Hours during the fall and winter will be in the afternoon and evening, and daytime hours during the summer.

Funding for the program will come from a variety of sources including a \$10,000 grant from CETA, a \$3,500 state reimbursement grant (an incentive payment for districts beginning the program for the first time), and state aid membership fees totalling \$1,300 for every four students who enroll in classes.

"Once the program gets off the ground it is pretty much self supporting," Cameron said. In addition to regular state membership fees, the program will also have an enrollment fee which is paid by the student.

As director, Rogers will have the responsibility of enlisting the suggestions of class offerings through a summer ad campaign in the area, as well as the hiring of certified teachers for all classes. Rogers is presently completing

U-M Regents-Alumni Scholars Announced

More than 1,000 outstanding Michigan high school graduates, including six from the surrounding area, who plan to enter the University of Michigan this year, have been named by the University as Regents-Alumni Scholars.

Chelsea students are Albert Frank Anderson, 14689 Waldo Rd.; Julie Ann Prohaska, 14580 Stoffer Court; Tamara Lynn Puglisi, 4401 Musbach; and Thomas Michael Young, 20700 Waldo Rd.

Kathleen Marie Lavey, 234 Putnam, Pinckney was named as was Barbara Ellen Korth, 410 Adrian St., Manchester.

Community Education Program Being Organized for Fall Start

Beginning next fall, Chelsea and surrounding area adults seeking to complete or begin requirements for a high school diploma will be able to do so through the newly established Community Education Program, Charles S. Cameron, superintendent for the school district announced.

In addition, area students of all ages will be asked for their input into the selection of classes which will be offered through the community education segment of the program.

A decision to initiate the program came during the board of education meeting, May 15. During that meeting, board approved the recommendation of Superintendent Cameron to institute a Community Education Program for 1978-79 and, at the same time, offered a contract to Jaclyn Rogers as director of the program.

"I am anxious to begin working with community residents to identify academic, enrichment, and recreational needs to design the new program," Rogers commented.

Rogers explained that a Community Education program "primarily reflects the educational needs and desires of a particular community. The emphasis becomes one of instituting the lifelong learning philosophy of education via the use of public schools and other valuable community resources."

Currently, more than two-thirds of the 500 school districts in Michigan have full-scale Community Education programs. "Michigan remains the leader in this dynamic national movement in the field of education," Rogers said.

Specifically, the program components may include pre-school classes, classes co-ordinated through the recreation department, a specialist degree and professional Mott Internship at Eastern Michigan University's Center for Community Education. Prior to the internship, Rogers was a Community School Co-ordinator for Bedford Public schools. She will assume her responsibility on July 1.

Rogers added that a full-time secretarial position will be available July 1. Applicants must be currently unemployed and a resident of Washtenaw county, she said. To apply, call Fred Mills at the Chelsea school district for an interview. Responsibilities include typing and office management. Hours during the fall and winter will be in the afternoon and evening, and daytime hours during the summer.

Funding for the program will come from a variety of sources including a \$10,000 grant from CETA, a \$3,500 state reimbursement grant (an incentive payment for districts beginning the program for the first time), and state aid membership fees totalling \$1,300 for every four students who enroll in classes.

"Once the program gets off the ground it is pretty much self supporting," Cameron said. In addition to regular state membership fees, the program will also have an enrollment fee which is paid by the student.

As director, Rogers will have the responsibility of enlisting the suggestions of class offerings through a summer ad campaign in the area, as well as the hiring of certified teachers for all classes. Rogers is presently completing

Maintenance Millage OK'd By 22 Votes

Schumann, Snyder Named School Board Members

By a tight margin of 22 votes (three ballots were spoiled) 606 Chelsea voters gave approval to a 1/2-mill levy for major school facility maintenance. 584 voters said no to the request during Monday's election.

At the same time, two candidates out of five were chosen for the four-year terms available on the board of education. Receiving the most votes was Dale A. Schumann with 682, followed by Dr. Daniel T. Snyder with 526, Arthur E. Dils, Jr., with 378, Roger A. Graves with 315, and James E. Spencer with 254.

Voting was extremely light, with only 1,193 out of approximately 4,500 registered voters casting ballots. Fred Mills, business manager for the school district, however, was "extremely pleased that the millage passed. We now have the means to begin needed repairs which in the long run will save the district money over the years," he commented.

Also commenting on the millage approval, Board President Robert Daniels said "while I am not surprised at the closeness of the approval, it is very satisfying to the board, school personnel, and many others that the millage passed. This will allow us to start work on the definite maintenance needs and to continue our investigation of federal funding for insulating the buildings," he said.

Elected to a four-year term on the school board, Dale Schumann said of the results, "I was particularly pleased that we had a

number of good candidates and I guess I was just lucky to be elected." Schumann added that "I am concerned with the appearances of the schools and will put my priorities in straightening up the schools and have them as a model."

Another concern, Schumann said was "to see that teachers receive the equipment they need to do their job. It is important that they have the proper tools," he said.

Newly elected Dr. Daniel Snyder commented that he was "pleased with the outcome although with no great burning issues my election does not seem a question of claiming an actual victory."

"People made their choices on the basis of discussions during candidates night, and Teachers Association meetings," he said. Snyder made heavy use of door-to-door communications in and outside of the village which he said "was very useful in meeting the people of the area and in gaining their support."

Commenting on his priorities as a school board member, Snyder said "because recent years have focused on the pursuit of operating millage, sometimes with difficulty, I now feel it is time to forge ahead in other areas, including a curriculum review."

"With the coming of a new superintendent and having a new high school principal, the future should prove to be challenging for the entire school board," he said. (Continued on page three)

Jeff Daniels Now in New York Hit Play

Playing the part, in Lanford Wilson's "The 5th of July," of a Missouri gardener and housemate of a Vietnam veteran double amputee, Jeff Daniels, a Chelsea High school graduate and resident actor in New York City, is currently in his seventh play since arriving in New York in 1976.

The play has won a New York Drama Desk Award Nomination for the best play of 1978 and reviews have been very favorable for the most part with Rex Reed of the "Gong Show" calling it "the best play in town! . . . If you care anything at all about the art of the American Theatre, you'd be insane to miss it!"

Performed by the Circle Repertory Company, "The 5th of July" is about a fourth of July week-end in Missouri on the farm of Vietnam veteran Ken Tally. Jed, his housemate, is turning some of the (Continued on page three)



COMMUNITY EDUCATION PROGRAM: Superintendent Charles Cameron welcomes Jaclyn Rogers, right, to the Chelsea School District as Director of the recently approved Community Education Program which will start this fall. In addition to offering adults 18 and over an opportunity to complete requirements for a high school diploma, the

The Chelsea Standard Telephone 475-1371
 Established 1871
 Excellence Award By Michigan Press Association
 1951-1952-1960-1964-1965-1968
 Walter P. Leonard, Editor and Publisher

Published every Thursday morning at 300 North Main Street, Chelsea, Mich. 48118, and second class postage paid at Chelsea, Mich., under the Act of March 3, 1879.

Subscription Rates (Payable in Advance)	
In Michigan:	Outside Michigan:
One Year\$6.00	One Year\$8.50
Six Months\$3.50	Six Months\$4.50
Single Copies\$.20	Single Copies\$.25

MEMBER National Advertising Representative:
NATIONAL NEWSPAPER
 Association - Founded 1895
 MICHIGAN NEWSPAPERS, INC.
 257 Michigan Ave.
 East Lansing, Mich. 48823

Uncle Lew from Lima Says:

DEAR MISTER EDITOR:
 Just when we think the Federal Government has figured out all the ways to tax money out of us and to give our money away along comes a whole new crop of ideas. Ed Doolittle reported to the fellers at the country store Saturday night where the U.S. Department of Energy has got a deal that puts plain giveaways in the shade. That outfit now is giving grants to hire experts to get more grants, Ed said.

If this ain't perpetual motion, Ed said at least it's the same as Bert Lance's trick of borrowing money to use to borrow more money, and the greenback grows round and round. The Energy Department wants to give \$10,000 to small companies to use to hire people to do the paperwork on applying for research grants on electric cars. The department has \$200,000 just to pay fertilizing out the forms. They say they got to give the money to give more money on account a formal request runs 100 pages and has to be done in 14 copies, and no small company is going to all that trouble with its own money.

Howell Livestock Auction
 Starts 1 p.m. Every Monday
 Phone 546-5400
 The Wise Owl Says Ship to Howell
 Phone 546-2470 Bim Franklin
 Market Report for June 13.

CATTLE—
 Bulk 60-Choice Steers, \$58 to \$60
 Few 50-Choice Steers, \$50 to \$60.70
 Ch-Choice Heifers, \$50 to \$55
 Fed Heifers, \$50 to \$55
 Ut-Std., \$40 and down.

COWS—
 Heifer Cows, \$46 to \$47
 Ut-Commercial, \$40 to \$45.50
 Canner-Cutter, \$35 to \$40
 Fat Beef Cows, \$40 to \$44

BULLS—
 Heavy Bologna, \$50 to \$55
 Light and Common, \$40 and down.

FEEDERS—
 400-600 lb. Good-Choice Steers, \$58 to \$60
 600-800 lb. Good-Choice Steers, \$50 to \$58
 300-400 lb. Good-Choice Heifers, \$45 to \$50
 300-500 lb. Holstein Steers, \$50 to \$55
 500-800 lb. Holstein Steers, \$45 to \$50

CALVES—
 Prime, \$70 to \$80
 Good-Choice, \$60 to \$70
 Heavy Deacons, \$50 to \$78
 Cull & Med., \$40 to \$60
 Calves going back to farms sold up to \$75

SHEEP—
 Woolled Slaughter Lambs, Spring:
 Choice-Prime, \$52 to \$55
 Good-Hilly, \$50 to \$52
 Slaughter Ewes, \$12 to \$22
 Feeder Lambs, All Weights, \$55 to \$60

HOGS—
 210 to 240 lbs., No. 1, \$50.50 to \$51.50
 200-250 lbs., No. 2, \$48 to \$50.50
 Heavy Hogs, 250 lbs. up, \$45 to \$48
 Light Hogs, 200 lbs. down, \$30 to \$45

Sows—
 Fancy Light, \$43 to \$45
 300-500 lb., \$40 to \$42.50
 500 lb. and up, \$35 to \$42.50

Boars and Stegs—
 All Weights, \$37 to \$42

Feeder Pigs—
 Per Head, \$20 to \$30
 Est. 40 lb. pigs, \$45 to \$55

HAY—
 1st Cutting, per bale, 25c to \$1.25
 2nd Cutting, per bale, 75c to \$2.00

STRAW—
 Per Bale, \$1.00 to \$1.65

COWS—
 Tested Dairy Cows, \$300 to \$550
 Tested Beef Type Cows, \$350 to \$450

FIFTH ANNUAL
OLD FASHION BARN DANCE
SATURDAY, JUNE 17
 9 p.m. 'til 2 a.m.
CHARLES TRINKLE FARM
 9631 TRINKLE ROAD
 - Featuring -
LUKE SCHAIBLE BAND
 Round and Square Dancing
 REFRESHMENTS and SET-UPS AVAILABLE
\$7 Couple \$3.50 Single
 All Proceeds to Special Education
 in the Dexter-Chelsea area.

★ **MICHIGAN MIRROR** ★
 By Warren M. Hoyt, Secretary, Michigan Press Association

New Truth in Renting Bill
 After nearly two years in negotiation and compromise, the Michigan House has adopted a truth in renting bill prohibiting clauses in residential leases that mislead tenants about their rights but cannot be enforced.
 The clauses are primarily the type that attempt to remove responsibilities or obligations from the landlord, even against clear language of state law or the constitution.
 Such items include a waiver of a jury trial, removing all culpability from the landlord for negligence or requiring the tenant to pay landlord attorney fees in any court disputes.

JUST REMINISCING
 Items taken from the files of The Chelsea Standard

4 Years Ago...

Thursday, June 20, 1974—
 An apartment at the back of the Knights of Columbus Hall was badly damaged Tuesday afternoon by a fire of unknown origin, Chelsea Fire Department has reported. The blaze apparently began in a bedroom of the two-bedroom apartment, and spread into the living room.

The celebration of several lifetimes will begin this Saturday at 9 a.m., when Dexter's Sesquicentennial officially opens to the tune of church bells ringing, fire whistles blowing, music at Monument Park, color salute by Dexter American Legion Post No. 557, and welcome by general chairman Bruce Waggoner.

The Rev. W. Scott Westerman, a resident of Chelsea United Methodist Home, last month donated his personal collection of 380 reels of tape recording to Eastern Michigan University's Sound Archives Collection.

Chelsea native, Randy Brier, who attended Washtenaw Community College this year, was chosen for a number of honors as a member of WCC's 1974 baseball squad.

Chelsea Recreation Council has established a new program entitled "Learn, Learn, and Play" where participants will work one hour daily under adult supervision to perform simple and sanitary clean-up jobs on playgrounds and in the community. Children will earn \$1.25 a week for their efforts.

14 Years Ago...

Thursday, June 13, 1964—
 A total of 146 persons attended the Chelsea Alumni banquet Saturday evening at the Chelsea High school cafeteria and of this number 108 were alumni and 39 wives, husbands or other guests of alumni.

Construction of a 32x100 foot addition to the present Merchant Building at the Chelsea Community Fair is to get underway in time to have the building completed and ready for installation of the electrical work by Aug. 1.

Constantine A. Cavadas, seaman apprentice, USN, son of Mr. and Mrs. Gus Cavadas, 317 N. Main St., participated in an extensive sea assault exercise last month called "Operation Pine Tree" off the coast of Southern California.

Carolyn Smith, a 1964 graduate of Chelsea High school, has been accepted to participate in the 1964 program of "Experiment in International Living." She will leave June 29 from New York City on the M. S. Aurelia for Holland and

24 Years Ago...

Thursday, June 17, 1954—
 Ralph Owings, son of Mr. and Mrs. Harold Owings, Sr., and Robert White, son of Mrs. Laurene White are Chelsea representatives at the 17th annual Wolverine Boys' State which begins today on Michigan State College campus.

Chrysler Corporation's 4,000-acre Engineering Proving Grounds, the automotive industry's newest and largest car and truck testing center, went on preview showing yesterday with a special dedication program for top representatives of newspapers, magazines, radio and television stations throughout the United States.

Mr. and Mrs. Anton Nielsen are leaving tomorrow for a five-week vacation trip to Denmark where they will visit Mr. Nielsen's father, Niels Nielsen, at Aars, and two sisters, Mrs. Axel Nielsen and Miss Marie Nielsen, at Copenhagen.

Girl Scout Court of Awards, held Tuesday evening in Chelsea High school gymnasium, opened with a procession march down the aisle by the Girl Scouts, preceded by a color guard which included Norma Jean Larson, Judith Wagner, Janet Ann Bernath, and Nancy Mayer.

Mr. and Mrs. Anton Nielsen are leaving tomorrow for a five-week vacation trip to Denmark where they will visit Mr. Nielsen's father, Niels Nielsen, at Aars, and two sisters, Mrs. Axel Nielsen and Miss Marie Nielsen, at Copenhagen.

Girl Scout Court of Awards, held Tuesday evening in Chelsea High school gymnasium, opened with a procession march down the aisle by the Girl Scouts, preceded by a color guard which included Norma Jean Larson, Judith Wagner, Janet Ann Bernath, and Nancy Mayer.

Mr. and Mrs. Anton Nielsen are leaving tomorrow for a five-week vacation trip to Denmark where they will visit Mr. Nielsen's father, Niels Nielsen, at Aars, and two sisters, Mrs. Axel Nielsen and Miss Marie Nielsen, at Copenhagen.

34 Years Ago...

Thursday, June 15, 1944—
 A Mobile X-Ray Unit of the State Health Department will arrive in Chelsea on Wednesday for X-raying of employees of local industries co-operating in the county-wide project.

Mrs. Erle L. Stewart has received word that her husband, 1st Lt. Erle L. Stewart, has been promoted to the rank of Captain. He is stationed in Northern Burma.

Mrs. Frank Abdon received two dozen red roses on Wednesday, at last week, as a belated Mother's Day present, cabled to her, from her son P.C. Robert V. Abdon of the U.S. Army who has been in the South Pacific area for more than two years.

During the first 12 days of June, the people of Chelsea purchased 189 bonds totaling \$25,577.50, invested, of which 181 purchases were "E" bonds amounting to \$9,337.50 and eight purchases were "G" and "G" bonds amounting to \$16,240.

Please Notify Us In Advance of Any Change in Address

Blue Cross Rates

Attorney General Frank J. Kelley has gone to bat for the consumers again, this time declaring that a scheduled rate increase for about 20 percent of the subscribers for Blue Cross-Blue Shield should be cancelled or scaled down.

Kelley said he wants to challenge the rate hike at a hearing before Insurance Commissioner Thomas Jones. A hearing has not yet been scheduled.

The proposed higher rates, amounting to a total of about \$31 million, are scheduled to become effective July 1, if approved by Jones. The Insurance Bureau, Department of Commerce, has recommended approval.

Kelley said the entire Blues rate structure should be subject to a full review by the commissioner. "It is clear that these rates could have an enormous impact on the economic well-being of this state. I consider it imperative that a matter of such importance to the subscribers and the general economic welfare of the state be carefully considered in an evidentiary hearing requiring cross-examination of witnesses," Kelley said.

He added his office will review the financial data and cross-examine company and staff witnesses on the reasonableness and necessity of the rate hike.

Illegal Weapons

Use of sawed-off shotguns and rifles would be punishable under bill recently passed by the Michigan House. Persons convicted of manufacturing, selling or concealing a sawed-off weapon could be

Ledwidge, Jones, Steele Victorious at Speedway

Despite the growing demand for lawyers, competition for available jobs in the legal field is expected to intensify from a burgeoning supply for law school graduates, according to the U.S. Department of Labor's Occupational Outlook Handbook.

Saturday, June 10 was a successful night of racing for three area drivers at Butler Motor Speedway. John Ledwidge in his first year of racing won his first two races—winning the first Late Model heat race and the Late Model Pursuit race. Carl Jones streaked to a win in the second heat Sportsman class. Tom Steele had another victorious night by winning the Late Model Semi-Feature.

The following is a summary of the finish of the area drivers.

1st heat (Late Model) — No. 34, John Ledwidge, 1st; No. 80, Joe Romeo, 5th.

3rd heat (Late Model) — No. 80, Tom Steele, 3rd; No. 22, Fred White, 4th.

Pursuit race (Late Model) — No. 34, John Ledwidge, 1st; No. 80, Joe Romeo, 5th.

Semi-feature (Late Model) — No. 80, Tom Steele, 1st; No. 22, Fred White, 3rd.

Feature (Late Model) — No. 34, John Ledwidge, 5th; No. 80, Joe Romeo, 7th.

2nd heat (Sportsman) — No. 43, Carl Jones, 1st; No. 34, Fred Worde, 6th; No. 80, Jerry Evilsizer, 10th; No. 78, Tom Stevens, out.

3rd heat (Sportsman) — No. 97, Larry LaRoe, out.

4th heat (Sportsman) — No. 85, Leonard Jones, 5th.

Semi-feature (Sportsman) — No. 85, Leonard Jones, out.

Feature (Sportsman) — No. 90, Jerry Evilsizer, 6th; No. 73, Tom Stevens, 7th; No. 43, Carl Jones, 8th.

Next regularly scheduled races at Butler Motor Speedway will be Saturday, June 17. Time trials at 6:30 with racing at 8 p.m.

sentenced to as much as five years in prison and/or fined \$2,500.

The weapons, made literally by sawing down a shotgun or rifle barrel, are considered extremely deadly by law enforcement officers. The weapons are allegedly popular with members of organized crime.

SALE
 ON
ALL STAUFFER WALLPAPER BOOKS
SAVE 30% to 33%
 This special value collection by Wall-Tex is available at
D. E. HOEY & SONS
 3515 Broad St., Dexter Ph. 426-8119

new "8 for 8" certificate
earns 8.30%* from 8.00%
 *doubles your money in 8 years and 8 months!

Without a doubt, this is the finest investment available to the savings/investor today! "8 for 8" investment certificates are available in amounts of \$1000 with a term of eight years. They pay 8.00% per annum and with monthly compounding provide an effective annual rate of 8.30%. Your money will double in about 8 years and 8 months. "8 for 8" certificates are insured with an agency of the federal government and federal regulations require a substantial penalty for early withdrawals. Full details at all offices or mail coupon.

GREAT LAKES FEDERAL SAVINGS
 P.O. Box 8600
 Ann Arbor, Michigan 48107

Name \$ _____ "8 for 8" Certificate
 Address _____
 City _____ Zip _____

GREAT LAKES FEDERAL SAVINGS
 Formerly ANN ARBOR FEDERAL SAVINGS
 Offices in Ann Arbor, Battle Creek, Albion, Bellevue, Brighton, Chelsea, Coldwater, Dexter, Hastings, Manchester, Marshall, Richmond, Saline, Ypsilanti • Member F.S.I.C.

ONE WEEK ONLY
All these cuts as cheap as hamburger!
99¢ lb.
CHUCK ROAST
CHUCK STEAK
SWISS STEAK
ARM ROUND ROAST
ENGLISH ROAST
RIB STEAK
RIB ROAST
STEW BEEF
SHORT RIBS
HAMBURGER
 Est. after processing \$1.25-\$1.35 lb.
DUNBAR'S DEXTER LOCKER
 8083 MAIN ST., DEXTER - PH. 426-8466 - PAUL DUNBAR, OWNER

ABWA Names Shirley Schneider Woman of Year

Chelsea chapter of the American Business Women's Association has announced that Shirley Schneider is their 1978 Woman of the Year. Shirley is a sales expeditor at Rockwell International, a native of Chelsea, active in the community and church affairs, and a Chelsea High school graduate. She has organized the Chelsea chapter and has worked as program chairman for the past two years. Thomas Eulich of Dearborn spoke on the topic "Time" and planned several of his antique items he had on display such as a pocket clock, sundial, hour glass, a clock, and a water clock. Shirley has in her collection a clock formerly owned by Henry Ford which weighs 650 pounds. Three scholarships were awarded by the chapter this year to Ki Koch, Carolyn Hubbard, and one Luick. "They are good young girls," Delphine Bolanow commented. Ricky Quackenbush of the Mayer Insurance Co. was the vocational speaker for the evening and told her position as an insurance broker. The next meeting will be at the home of Gail Salyer, 540 Chandler St., on June 27 at 7 p.m. There will be a pot-luck dinner and dress casual. Shari Roberts will be the vocational speaker.

Young Homemakers Elect New Officers

Young Homemakers met Thursday, May 25 at the home of Mrs. Mary Herrick. Co-hostess was Mrs. Donald Plumb. Election of officers was held and 1978-79 officers are: Arlene A. president; Diane Horning, vice-president; Francis Murphy, secretary; Vickie Kern, treasurer; Kay Heller, reporter. Members of the planning committee are: Arlene Grau, Diane Horning, Martha Luick, Penny Wolfgang. The picnic committee includes Francis Murphy, Diane Koenig, Diane Horning, Arlene Grau. During the meeting, guests played white elephant bingo and refreshments were served.

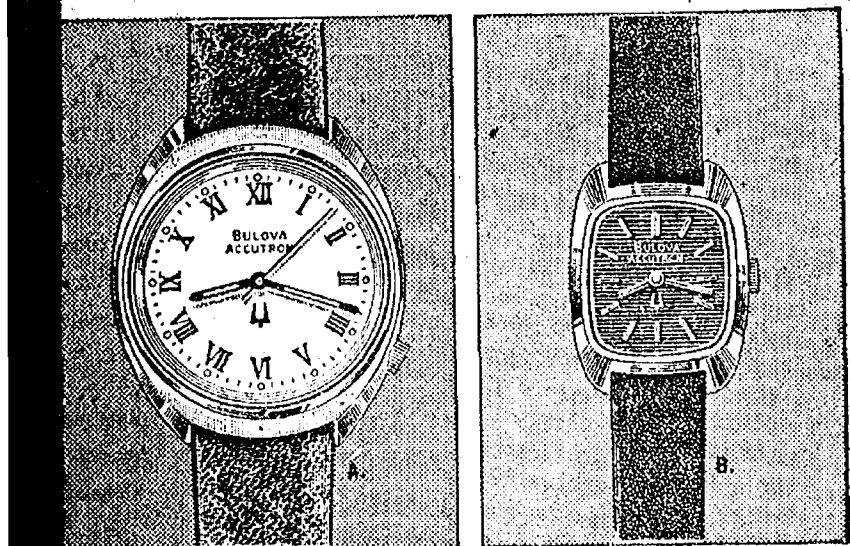
Statistics indicate that only one out of every six Americans who could fit from use of a hearing aid wearing an instrument, according to hearing specialists.

RICARDO'S HAIR STYLING

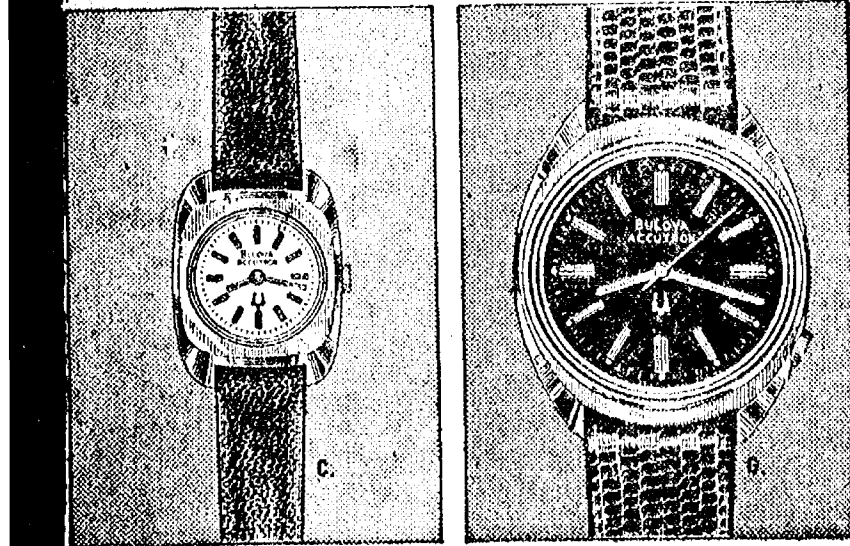
107 N. Main, Chelsea

OPEN TUESDAY THROUGH SATURDAY
475-1671

BULOVA ACCUTRON



YOUR CHOICE: \$75.



Until now, for \$75.00 you could afford only an ordinary watch. Now, for \$75.00, you can afford Bulova Accutron, the time-tested electronic watch that never needs winding. And you have a choice of styles. For men and women. Select yours today.

- A. Stainless steel, white enamel dial, \$75.00
- B. Silver-tone finish, blue dial and strap, \$75.00
- C. Silver-tone finish, silver dial, black strap, \$75.00
- D. Stainless steel, blue dial, black strap, \$75.00

WINANS JEWELRY



VFW Auxiliary Names Delegates to Nat'l Convention

Regular monthly session of the Veterans of Foreign Wars Auxiliary No. 4076 was held Monday, June 12 with 10 members present. Delegates elected to attend the national convention in Dallas, Tex., in August were Eulalie Packard and Bessie Sharp; alternate delegates are Mary Kniss and Elizabeth Smith.

Delegates planning to attend the state convention in Southfield, June 22-25, are Lucy Platt, Judith Kent, Mary Kniss, Eulalie Packard and President Bessie Sharp. Several past members are also planning to attend.

Reports were given by the District delegates on the District No. 6 activity held on May 21 in Chelsea. A joint planning meeting will be held in Brighton on July 16 to formulate activities for the 1978-79 year for both VFW posts and the auxiliaries.

July 15 has been the date chosen for the local auxiliary to celebrate the 33rd anniversary with a pot-luck supper, followed by a short program in the VFW hall at 6:30 p.m.

Local VFW post is sponsoring a Lite-A-Bike program Saturday, June 17, at the Chelsea Fire Station parking lot. Auxiliary members will serve cold drinks to all participating bicyclists.

A caravan of post and auxiliary members are forming to motor to the National Home on July 9 to attend the National Home carnival. Those attending should take a picnic lunch.

A group of children from the National Home will arrive on June 20 to enjoy a spaghetti dinner at the local VFW hall enroute to a baseball game.

The next regular meeting will be July 10 at 8 p.m. in the hall. Buddy Poppy chairman Lucy Platt gave a report of the May 19 poppy sales, stating results were gratifying and expressed appreciation to the workers and the public for their support.

followed by some practice at tent raising and a baseball game.

Letters to the Editor

To the Editor,

The good people of Chelsea spent a long evening the other week-end toasting and roasting my Uncle Charlie Cameron on the occasion of his having survived 41 years of his coach, principal, and school superintendent.

Everything they said about him was the truth—that I am confident. Many of the speakers said he would be missed. I hope they know how much they will miss him.

But here's the rest of the story that did not get told. Uncle Charlie and Aunt Ruth, besides all the good they did in Chelsea in the last four decades, have been loyal, loving standbys of a large and scattered family.

They have shown up at every family reunion, wake, christening, first communion, confirmation, ordination, wedding, anniversary and retirement party in the extended and dispersed Cameron family since FDR's third inauguration.

Ruth's family, the Sinclairs, got the same treatment. Remember Aunt Florence? She was an aging relative of Ruth's who was made welcome in the Chelsea Cameron's home off and on for some significant number of years. And now Ruth's mother, too.

From my late mother (Charlie's younger sister) and father, I learned something about the depth to which love can go. From Uncle Charlie and Aunt Ruth I learned how constant over years and decades love and care can be.

So, Chelsea; I thought you ought to know the rest of the story. Maybe now you know the reason nearly 20 of us showed up for the dinner. (We were that tough-looking bunch up front.) We love Charlie and Ruth, too. They taught us a lot about how to love.

Harry T. Cook, II.

Persons who frequently mistake "sound alike" words such as "stock" and "shock" and "big" and "pig" may be exhibiting the signs of a hearing loss, warn hearing specialists.

PARENTS:

Help your children know and accept Jesus Christ as their personal Savior! Bring them to our VACATION BIBLE SCHOOL!

Here's where your children learn about the wonderful relationship they have with Jesus. And through Bible stories, fun activities, and handicraft projects, they'll grow stronger in their love for their Savior and in Christian living!

SIGN UP YOUR CHILDREN TODAY!

Our Savior Lutheran Church
1515 S. Main, Chelsea
JUNE 19-23, 1978
9-11:30 a.m.

Jeff Daniels...

(Continued from page one)

back acres into an English garden when old friend's of Ken's arrive for the week-end. Ken offers his friends a chance to buy the farmhouse so that he and Jed can travel but Jed would rather keep the house. So would Jed's aunt Sally who also arrived at the farm to spread her late husband's ashes somewhere on the grounds.

Aunt Sally has been carrying the ashes around in a candy box since he died a year ago.

Ken's friends agree to buy the house, which forces Ken to make a decision between selling the house or not, between the celebration and the going on, and, in the end, passes up his friend's offer and commits himself to a future at the farmhouse with Jed. Aunt Sally spreads her husband around the rosebushes.

Circle Repertory Company plays off Broadway with a company of 15 actors who perform in six plays a season. It has 11 resident playwrights including Lanford Wilson, John Bishop and Albert Innaurato. Known primarily as the "theatre of the new American play" CRC receives close to 50 new scripts weekly.

Daniels graduated from Chelsea High school in 1973 and after three years at Central Michigan University went to New York in 1976. In 1977 he understudied three leading roles on Broadway in the play "Gemini." Other CRC plays he has been in include "Feedlot," "The Farm," "My Life," and "Lulu." He has also appeared in several national television commercials.

School Election...

(Continued from page one)

Snyder added that "I felt we need to develop an improved image and create new confidence in the public and build better cooperation between the board, administration, and teachers so that when new funds are requested, the voters will know the money is being well spent," he concluded.

New board members will assume their responsibilities on the second Monday in July when new officers for the board will also be elected.

Bike Safety...

(Continued from page one)

safety program. Kool-Aid will be served to everyone who participates, Carl Heldt and Jim Finch, co-chairmen for the event, said. Parents are asked to check their child's bike for a current license which may be purchased from the Chelsea Police Department. Licenses are due in June and cost 50 cents.

"With vacation from school and many bikes on the streets, the safety of our town's children is very important to us all," Heldt said.

One of every 15 Americans suffers from hearing loss, according to hearing specialists. This means hearing impairment is the nation's number one handicapping disability.

CAROL'S CUTS

328 Wilkinson

Closed
During July
475-7094
Appts. Only

Summer Camp...

(Continued from page one)

is \$2 per child for the entire summer. The camp meets from 9 a.m. to 2 p.m. at South school, North school and Pierce Park. Weekly announcements will be made in The Standard of special activities. Further information may be obtained by calling the Recreation office at 475-7165 from 11 a.m. to 5 p.m. Monday through Friday.

Please Notify Us of Any Change in Address.

FATHER'S DAY SPECIAL

Thurs., Fri., Sat., June 15-16-17 Only

MEN'S TIES
DRESS SLACKS
SHORTS
SWIM SUITS

25% Off

DANCER'S
Chelsea's Friendly Dept. Store

Free Pamphlet Explains Details of Medicare Program

Health insurance is one item in the budget that can save you money. But up until a few years ago, older people had a hard time either getting or affording health insurance. Then came Medicare. It provides low-cost health insurance through the Social Security system.

To help you understand this program, the Social Security Administration has published a pamphlet called A Brief Explanation of Medicare. For your free copy, send a postcard to the Consumer Information Center, Dept. 683F, Pueblo, Colo. 81009.

What is Medicare? It is a health insurance program under social security that helps Americans 65 and older and many severely disabled people under 65 to pay the high cost of medical care. It has two parts, hospital insurance and medical insurance.

Practically everyone over 65 is eligible for both hospital and medical insurance. And Medicare is also available to those under 65: if they are disabled and have been entitled to social security or railroad disability benefits for two consecutive years or more, or they need dialysis treatments or a kidney transplant because of permanent kidney failure and are insured under social security or railroad retirement.

You don't have to retire to get the hospital insurance protection. Even if you keep working you will be covered if you have worked long enough under the social security system. To find out if you are eligible, check with your social security office about three months before you reach 65. And if you haven't been under the social security or railroad retirement system, you can get this coverage by paying a monthly premium.

The hospital insurance benefits help pay the cost of up to 90 days of in-patient care in any participating hospital for each benefit period. A benefit period starts when you have been out of the hospital or any other facility providing skilled nursing care or physical rehabilitation service more than 60 days. There is no limit to the number of benefit periods you can have.

There is a reserve of 60 additional in-patient hospital days if you ever need more than the 90 days. However, each reserve day you use permanently reduces the number of reserve days you have left.

Under certain conditions, the insurance also covers up to 100 days in a skilled nursing facility and up to 100 home health visits from a home health agency per benefit period.

To help cover doctor's costs, there is Medicare medical insurance. It pays 80 percent of doctor's costs and many other costs

The Chelsea Standard, Thursday, June 15, 1978

GREAT GIFTS for DAD

SLACKS by FARAH

GLEN OAKS

Foster's Men's Wear

TOUCH OF GLASS

A Style for Any Occasion!

1196 M-52

Phone 475-1591

Open Tues. thru Fri. 9 to 4
Saturday 9 to 2
Evening hours by appt. only

Men's & Women's Cuts & Styles
Senior Citizen Discounts every day.

Carl's Cleaning Service

521 S. Main St. Chelsea, Mich.

Professional Carpet & Upholstery Cleaning

BUSINESS - RESIDENTIAL

FREE ESTIMATES

Phone 475-8007

Tonight and Every Thursday THE CAPTAINS TABLE ROAST BEEF BUFFET



"Carved Before Your Eyes"
Serving from 4:30-9:30 p.m.

The Captains Table - 8093 Main St., Dexter

WALLPAPER SALE



Starting Monday, June 19th through Saturday, July 1, any wallpaper ordered from the books listed below will receive a 30% discount. To give everyone an equal opportunity to the savings, we will be keeping the books in the store. Bring your upholstery, carpet and paint samples with you, and let our designers help you with your selection from these outstanding groups.

STAUFFER
Casual Elegance
Inspirations Vol. II
Main Street Vol. II
S.C.C. Textures
Signatures
Total Look
Your Way

WARNER
Brite Traditions
Chicago Art Institute
Little Prints Charming
Revere Collection
Warner Vinyl

Merkel
HOME FURNISHINGS
OPEN MON & FRI UNTIL 9 PM
PHONE 475-8621

Farm Placement Service Requested

Farm Bureau has called upon the Farm Placement Service and place it within the USDA as a part of the executive branch reorganization. Farm Bureau said that merging of the service with a broader program within the Department of Labor has resulted in little interest in agricultural employment.

FEED

FOR PROFIT



Feed Formulas Tested, Proved To Get Results

Extra proteins, vitamins and minerals in proper balance, scientifically blended, make our feeds real profit producers for you.

Farmers' Supply Co.
Phone GR 5-5511

AUCTION

SATURDAY, JUNE 24

Commencing at 11:00 a.m.

Loren Heller, Auctioneer Chelsea, Mich. 475-7083

Having sold our farm, we will be selling the following items at public auction. Located 4 1/2 miles east of Chelsea or 5 miles southwest of Dexter, one-half mile from Jackson Rd. to 300 Dancer Rd.

FARM MACHINERY

1954 Case DC tractor, good rubber.

1942 SC Case tractor with two-row cultivator.

Case 800 combine with two-row corn head and 10 ft. grain head, power steering, good condition.

230 Case baler.

Oliver two-bottom plow on rubber.

Ford 2-row cultivator with 2-pt. hitch.

Case blower with 40 ft. pipe.

John Deere 17 hole grain drill.

2 gravity boxes with 8-ton running gear.

McCormick 4-row corn planter.

75 ft. 6-inch endless belt.

Case 8-ft. disc, hydraulic cylinder.

13-ft. weeder, 3-pt. hitch.

Case manure loader.

McCormick double row culti-packer.

John Deere 3-bottom plow.

Case 4-bar rake. Milk cans.

16-ft. aluminum elevator with motor.

2 flat wagons.

12-ft. Case drag.

20-ft. ladder.

Hay forks, pulleys, ropes.

Vises.

Crosscut saw. Space heaters.

Steel and wood posts.

Wooden gates.

4 rolls snow fence.

New stave fence.

Fence stretchers.

Drinking cups.

Surge vacuum pumps.

Surge buckets.

Can hangers.

Wash tanks.

Electric motors.

Misc. hand tools, pipe.

Lawn seeder.

Antique & Household

Antique lanterns.

Bottles, radio, mirrors.

Dirt mover.

Solid oak dresser.

Maple dresser with bed.

Old trunk.

8-drawer dresser.

Steel frame bed.

Child table set.

Child rocker.

Paper hanger kit.

Extension scaffold.

Book case.

Maytag washer.

Crocks and bicycle.

Pumps.

End tables.

Chairs.

Baby crib.

Play pen.

Fruit jars.

Picture frames.

Tables.

Many Other Items
Too Numerous To Mention.

TERMS: Cash or Check with proper I.D. Not responsible for accidents.

Lunch on Grounds

DON & KATHRYN HERRST

OWNERS

Auctioneer: Loren Heller, Chelsea Clerk: David Pratt, Manchester

Dexter Township Board Proceedings

Regular Meeting,
Dexter Township Board
Date: Tuesday, June 6, 1978, 7:30 p.m.
Place: Dexter Township Hall.
Present: John Tandy, William Eisenbeiser, Lorinda Jedele, John Miller.
Meeting called to order by supervisor John Tandy.
The minutes of the May 16, 1978 meeting were read. Moved by Jedele, supported by Miller, to accept the minutes as read. Carried.
Supervisor's Report: (enclosed).
Treasurer's Report: (enclosed).
Zoning Report: (enclosed).
Moved by Eisenbeiser, supported by Jedele, to continue membership in the M.T.A. for 1978 and pay the dues. Carried.
Moved by Miller, supported by Jedele, to pay bills as submitted in the amount of \$7,482.67. Carried.
Moved by Eisenbeiser, supported by Miller, to have the zoning inspector available from 12:00 to 1:00 M., W., F., and investigate the possibility of securing an answering service for the zoning inspector. Carried.
Moved by Miller, supported by Jedele, that the Clerk establish a current master copy of the Zoning Ordinance. Carried.
Moved by Miller, supported by Jedele, to hold 1st regular meeting of July on July 11, 1978. Carried.
Moved by Eisenbeiser, supported by Miller, to adjourn the meeting.
Meeting adjourned.
Respectfully submitted,
William Eisenbeiser,
Dexter Township Clerk.

Lima Township Board Proceedings
June 15, 1978 Meeting Minutes
The Lima Township Board met June 5, 1978.
Present were Clerk Bareis, Treasurer Tilt, Trustees Gross and Wirtz. Absent was Supervisor Musolf.
Clerk Bareis appointed Trustee Gross chairman for the meeting. The minutes of the May meeting were approved as read.
The treasurer's report was approved.
Approved clerk request more information regarding annexation north of Old US-12 to the village.
Approved that Washtenaw Farmers Oil Company be contacted to clean the Townhall furnace.
Approved rezoning the Hastings property to Rural Residential as recommended by the Planning Commission. Ayes, Tilt, Bareis, and Gross. No, Wirtz.
A decision on the Burkhalter Open Space easement request was tabled for three months. Ayes, Bareis, Wirtz and Gross. Abstain, Tilt.
Approved motion to publish a public hearing for Freeman Machine Industrial Development District request for August 14.
Approved accepting payment for application of salt brine to Harper Drive per Road Commission estimate.
Approved appointment of Wally Fusilier to Huron River Watershed Council as delegate.
Approved appointment of Jim Bradbury as temporary zoning inspector from June 16 through August 20.
Approved obtaining estimates from Central Services for Planning Commission forms.
Approved payment of bills in the amount of \$3,807.75.
The Boy Scouts will be contacted for help in cemetery clean-up.
Meeting adjourned at 11:14 p.m.
Respectfully submitted,
Arlene Bareis, Clerk.

Dial-A-Garden Topics Listed

Dial-A-Garden, the system of pre-recorded daily gardening tips, is sponsored by the Washtenaw County Co-operative Extension Service. The system is in operation 24 hours per day, seven days a week, and is available by calling 971-1122 at their convenience and receive timely, up-to-date gardening information.
Next week's Dial-A-Garden topics are:
Friday, June 16—"Better Vegetables in Containers."
Tuesday, June 20—"Ways To Eliminate Slugs."
Wednesday, June 21—"Bug Alerts."
Thursday, June 22—"Eliminating Poison Ivy."
Six Dexter Students Graduating from WCC
Six students from Dexter, one with high honors, will be graduated Saturday, June 17 at commencement exercises at Washtenaw Community College.
Angela Burns will be graduated with honors from the general studies program at the college which will grant her an associate degree.
Lori Barnett, Suzanne Fahlebeck and Susan Geer will receive certificates for successful completion of their work in practical nursing. Suzanne has also earned an associate degree in general studies.
Joanne Dupuis and Mary E. Morcom will both be granted associate degrees from the dental assistants program.
The Dexter students are among more than 500 students who will be graduated in the annual exercises.

Hits Move on Beef Imports

The president of the Michigan Farm Bureau, Elton R. Smith, Thursday, June 8, blasted President Carter's decision to increase beef imports. Smith called it a "stupid, short-sighted decision that would have very little effect on consumer beef prices, but a disastrous impact on agriculture."
Smith pointed out that the U.S. Department of Agriculture has admitted that the extra imports will only serve consumers a few pennies a pound on the retail price of beef. "So why did the Carter administration take this action that will only serve to lower the price of beef producers receive?" he asked. "Our beef producers have just suffered through four years of ruinously low prices. Now, just when the beef industry is getting back on its feet, the President wants to pull the rug out."
Smith said that farmers appreciate the idea that Carter is trying to do something about inflation. "But allowing more foreign beef into the U.S.," he said, "is a penny-wise, dollar-foolish decision. It saves consumers a few pennies now, but will cost consumers many dollars in the long run by decreasing supplies of American-grown beef."
Severe head colds and earaches, two maladies common among summer water sports enthusiasts, can lead to serious and even permanent hearing loss if not properly treated, warn hearing specialists. These disorders deserve medical attention the official stresses.

The Chelsea Standard, Thursday, June 15, 1978

NOW ON TUESDAY NIGHTS CHICKEN BUFFET



with our Famous Deep-Fried Chicken
and SPECIAL BARBECUED CHICKEN
also mashed potatoes and gravy, dressing, and salad bar.
Serving from 4:30-9:00

at the CAPTAINS TABLE
8093 MAIN ST., DEXTER PH. 426-3811

STAY COOL IN YOUR OWN POOL

Complete pool packages include everything except the water.

18' ROUND including tax	\$945
24' ROUND including tax	\$1175
15' x 30' OVAL including tax	\$1630

- Quality-built all aluminum above ground pool
- Sturdy 6" aluminum supports
- Attractive woodgrain pattern aluminum sidewall
- Heavy 20 gauge vinyl liner
- High capacity sand filter with 3/4 hp pump
- Through the wall skimmer
- "In and Out" aluminum ladder
- Do It Yourself installation



Enjoy summer living as you never have before with your own backyard pool. Crystal Clear has a complete line of affordable pool kits and accessories available.




VISA and MasterCharge cards welcome

Call 769-POOL (769-7665)
6043 Jackson Road, 3/4 mile west of Zeeb

YOU'VE GOT MY WORD ON IT.


There may be bigger used car lots in the area. But there aren't any that are better than Ramps's. You've got my word on it. I'm Bill Miller, Used Car Sales Manager for Ramps Chevrolet.

I'm responsible for seeing to it that when someone buys one of our used cars, he's got more to depend on than a smile and a handshake.

I personally decide which used cars and trade-ins will stay on our lot. And because I'm careful about the cars I choose, Ramps can back me up with both his good name and his OK Used Car Sticker.

So, when you're in the market for a good used car, shop where quality is just as important as volume... Ramps Chevrolet. I'll give you my word on any car on the lot.

Ramps's not just selling cars, he's selling service.

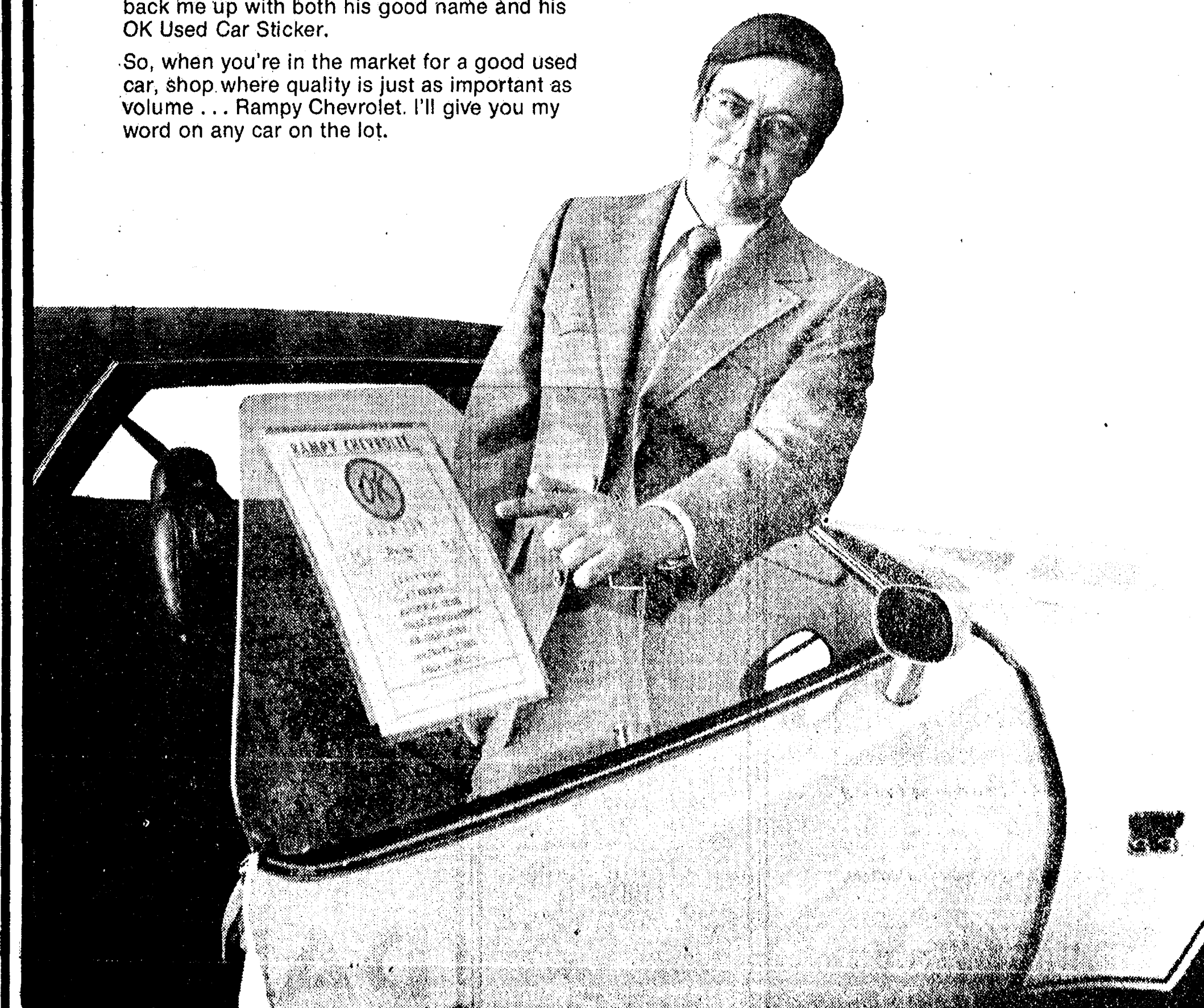


Ramps

CHEVROLET

CORNER JACKSON & WAGNER RDS., ANN ARBOR, PHONE 663-3321

Ramps sponsors the Huron Valley Corvette Club.
For information, call 482-3303.



GRAND OPENING of Our New Showroom in Manchester

146 E. MAIN STREET

SATURDAY, JUNE 17

9 a.m. to 2 p.m.

★ AMISH MADE CABINETS

★ CABINETS BY CENTENNIAL

★ MERILLAT CABINETRY

DUTCH COUNTRY KITCHENS



Phone (313) 428-7292

Manchester

Hitchhiker Arrested on Outstanding Warrants

A 21-year-old Ann Arbor man, Randy Joseph Willrich, 1125 North Main Place, was arrested in Chelsea Saturday morning, June 10, for having two outstanding traffic warrants, according to Chelsea police reports.

While on routine patrol, Chelsea officers Orr and Water spotted Willrich hitchhiking on South Main St. at approximately 12:45 a.m. After running a check, officers learned that he had two valid traffic warrants from Ann Arbor still outstanding.

Willrich was taken to the Chelsea station where he posted a \$50 bond. He is scheduled to appear in the 15th District Court on June 18 for arraignment, the report said.

Between 1976 and 1985, the U.S. Department of Labor predicts, an estimated 29 million jobs will become available to replace workers who die or retire.

A TRIBUTE TO THE BIBLE

This book contains—the mind of God, the state of man, the way of salvation, doom sinners and happiness of believers. Its doctrines are holy, its precepts are binding, its histories are true and its decisions immutable. Read it to be wise, believe it to be safe, and practice it to be holy. It contains light to direct you, food to support you, and comfort to cheer you. It is the traveler's map, the pilgrim's staff, the pilot's compass, the soldier's sword, the Christian's charter. Here paradise is restored, heaven opened, and the gates of hell disclosed. Christ is its grand subject, our good its design and the glory of God its end. It should fill the memory, rule the heart and guide the feet. Read it slowly, frequently, and prayerfully. It is a mine of wealth, a paradise of glory and a river of pleasure. It is given you in life, will be opened at the judgment and remembered forever. It involves the highest responsibility, rewards the greatest labor. . . . —Anon.

CHELSEA CHURCH OF CHRIST

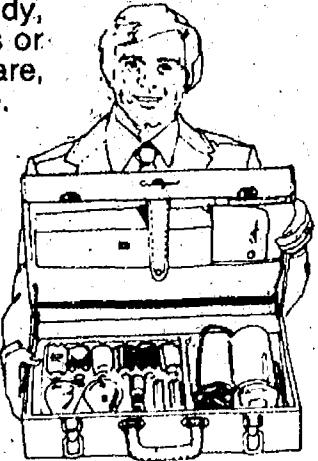
13661 Old US-12 Chelsea, Michigan

FREE scientific analysis of problem water.

If the water in your house looks cloudy, stains wash and porcelain, tastes or smells bad, spots dishes or glassware, we'll test it for you free of charge.

We'll tell you exactly what the trouble is and recommend the best, most economical way to get clean, clear, filtered fresh water.

Water conditioning is our full time business. We are local specialists backed by the world's leading maker of water conditioning products.



Just pick up the phone now and say . . .
'HEY CULLIGAN MAN!'

2321 Jackson Ave., Ann Arbor
662-5865



SWING YOUR PARTNER round and round at the annual Old Fashion Barn Dance slated for this Saturday, June 17 at the Charles Trinkle farm, 9631 Trinkle Rd., Dexter. Sponsored by the Lima Liberty Belles and Bushkateers, the dance will begin at 9 p.m. and continue until 2 a.m. All proceeds will be used to benefit Chelsea-Dexter Special Education and High Point in Ann Arbor. Tickets may be purchased at the gate.

Trinkle Barn Dance Scheduled June 17

"Allemande 'left & Do-Si-Do'" shake the dust off your Bi-Centennial costumes and get ready to go to the 5th annual "Old Fashioned Barn Dance" benefit, June 17, at the Charles Trinkle Farm, 9631 Trinkle Rd., Dexter.

Come dressed to the teeth or as you are for the annual affair Saturday evening from 9 p.m. to 2 a.m. Music, as in the past, will be provided by the Luke Schable Band, for round and square dancing, or for just listening.

Refreshments and set-ups will be available for purchase as well as German sausage, popcorn, and pop from the Chelsea Kiwanis "wagon."

Tickets are available at the following locations: Fran Coy Hair Stylists, Wagner Rd., Ann Arbor; Bouillon Sales, Captains Table, McLeod Drugs, and Royal Hair Fashions in the Dexter area; Chelsea Chiropractic Center, Heydlauff's, Vogel's and the Pump & Pantry in Chelsea; and Gambles Store in Manchester. For further ticket information, call Detling's at 426-4343.

This dance is again sponsored by the Lima Liberty Belles and the Lima Brushkateers (a chap-

ter group from the Dexter Sesqui-Centennial 1973), hard working people for a good cause. All proceeds will go to Special Education in the Chelsea and Dexter schools.

To all of you who have attended the dance in the past, we certainly hope to see you again this year, and to those who have not attended before, please come and join the fun for a memorable evening and to help a worthwhile cause—Special Education.

4-H CLUBS

ROGERS CORNERS HERDSMEN
Rogers Corners Herdsman 4-H Club meeting was called to order by President Tim Welshans. 4-H flag pledge was led by Steve Grau. American flag pledge was led by Troy Satterthwaite.

Demonstration for sheep was given by Sue Heller, Beth Heller, and Matt Grau. Scott Powers, Tim Welshans, and Danny Trinkle gave the swine demonstration.

Individual group meetings were held and the meeting was adjourned at 9:30 p.m.

Vacation Bible School Set at Lutheran Church

Our Savior Lutheran church vacation Bible school will be held at the church on 1515 S. Main St. beginning Monday, June 19 and ending Friday, June 23.

Children ages 3 through 8th grade are welcome to join in Christian fellowship with others in the Bible classes, handicrafts, games, songs, and refreshments to be offered.

Sessions will run from 9 a.m. to 11:30 a.m. Monday through Friday. Children may register Monday morning, June 19, before classes begin.

Witnesses To Attend Convention at Silverdome

A schedule of 20 international conventions has been completed by Jehovah's Witnesses for the continental United States during the summer of 1978.

Spokesman R. Krumm said 90 persons will represent Chelsea at Silverdome in Pontiac, June 21-25. Krumm said 50,000 delegates are anticipated for the convention from the state of Michigan and part of Ohio.

Telephone Your Club News To 475-1371.

Kathryn Rybka Awarded Degree At Mich. State

Kathryn Marie Rybka received a bachelor of arts degree in advertising and public relations at commencement exercises at Michigan State University on June 10.

Miss Rybka is a graduate of Chelsea High school and is the daughter of Mr. and Mrs. Henry J. Rybka of Old US-12.

While attending Michigan State University, Miss Rybka was a member of the University Advertising Club and Women in Communication, Michigan State University Chapter.

She was publicity director for the University Student Programming Board and worked at the State Capitol for Mark Siljander, state representative.

Currently she is residing in East Lansing and is employed at the Towne Courier newspaper.

The inability to locate the source of sounds often is an early symptom of a developing hearing loss, warn hearing specialists.

OIL-PROOF PLUS SUPPORT



Mechanics, station attendants, machine shop operators—and tired feet and aches. Full-grain leather, steel shank and "Sweat-Proof" flexible split leather insole provide total comfort. Try on a pair today.

RED WING

VOGEL'S & FOSTER'S

Ph. 475-1606 Chelsea, Mich.

The Chelsea Standard, Thursday, June 15, 1978 5

A & W CHELSEA

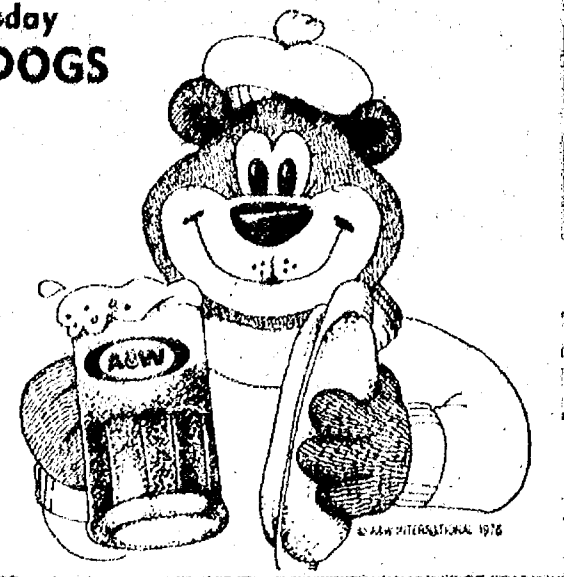
I-94 and M-52

Special Every Tuesday
CONEY HOT DOGS
45c

Special Every Wednesday
FOOT LONG HOT DOGS and ROOT BEER
\$1.00

Open 7 Days A Week
475-2055

Save Time - Call Orders in Ahead



Tell Them You Read It In The Standard!

Metzger's German RESTAURANT

IMPORTED & DOMESTIC BEERS & WINES
COCKTAILS



GERMAN and AMERICAN FOODS NOW OPEN SUNDAYS

11:30 a.m. 'til 8 p.m.

For more information call 668-8987

203 E. Washington, Ann Arbor

Between S. 4th & 5th Ave.

Open Wed., Thurs., Fri., 4 p.m. to 11 p.m.
Sat., 4 p.m. to 10 p.m., Sun., 11:30 a.m. to 8 p.m.

FRESH MEATS

U.S.D.A. CHOICE BEEF

Jiffy market

Big Enough To

Serve You . . . Small Enough To Know You!

HOURS: 7 DAYS A WEEK
7 a.m. to 10 p.m.

WE ACCEPT
U.S.D.A. FOOD STAMPS

SALE PRICES EFFECTIVE
Thurs., June 15 thru Sun., June 18

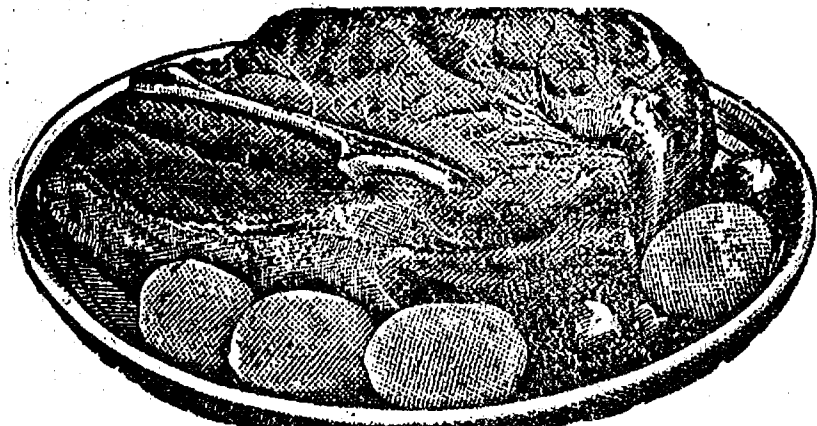
COMPLETE SUPERMARKET

FRESH MEATS
U.S.D.A. CHOICE
BEEF

COLD BEER
WINE
LIQUOR

CHUCK ROAST

89c lb.
BLADE CUT



U.S.D.A. CHOICE BEEF

CENTER CUT CHUCK ROAST lb. 99c

U.S.D.A. CHOICE BEEF

ENGLISH CUT ROAST . . . Chuck Cut Lb. \$1.39

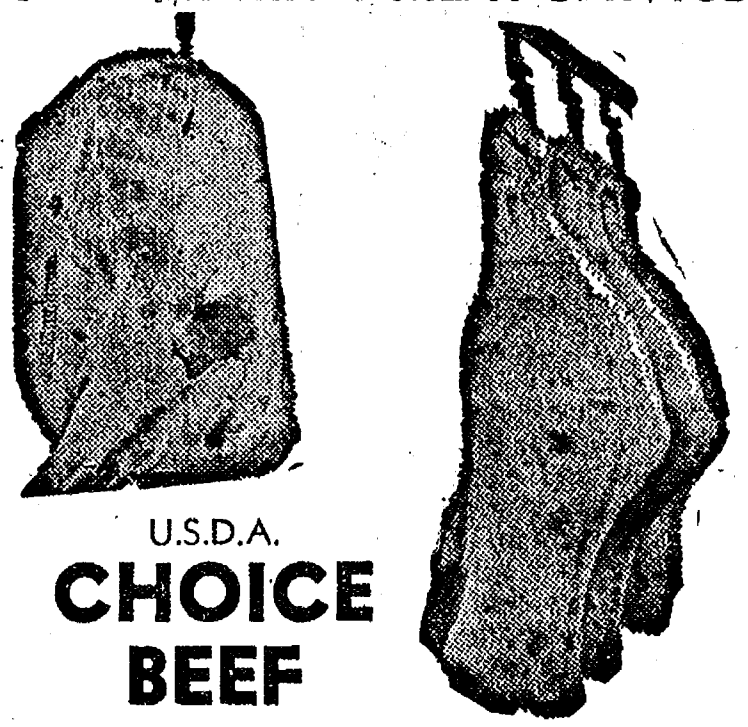
U.S.D.A. CHOICE

ARM ROAST . . . lb. \$1.39

U.S.D.A. CHOICE BEEF LEAN

BEEF SHORT RIBS . lb. 69c

JIFFY MARKET MEAT SERVICE



U.S.D.A. CHOICE BEEF

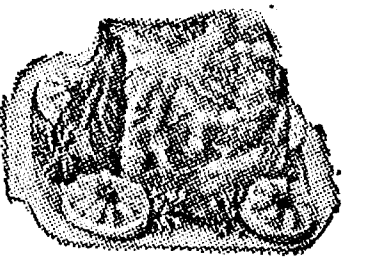
SIDES - FRONTS - HINDS
WHOLE RIBS - WHOLE LOINS

CUSTOM CUTTING - WRAPPING - FREEZING
QUICK SERVICE ON BUTCHERING
YOUR BEEF OR OURS

YOUNG, TENDER, LEAN PORK

FRESH, WHOLE
PORK BUTTS

\$1.09 lb.



FRESH

PORK ROAST . Boston Butt Lb. \$1.19

FRESH

PORK CUTLETS . . . Lb. \$1.39

FRESH

PORK SAUSAGE . Lb. \$1.19

FRESH

PORK STEAK . . . Lb. \$1.29

PEET'S RE-PEETER SLICED BACON

1-Lb. Pkg. \$1.49

Young, Tender, Sliced BEEF LIVER

59c lb.

MICHIGAN MADE CHUNK BOLOGNA

99c lb.

FARMER PEET'S ALL-BEEF FRANKS

1-Lb. Pkg. \$1.29

ARMOUR LARD

2 lbs. 77c
Reg. 97c

COURTLAND VALLEY Sauerkraut

32-Oz. Bag 39c

SPECIAL - WHOLE PORK LOINS

AVERAGE WEIGHT - 15 LBS.
JUST CUT \$1.29 lb. OR Sliced, Freezer Wrapped, Quick Frozen \$1.39 lb.

FRITO'S CORN CHIPS

8-Oz. Bag 48c

FARM MAID Homogenized FRESH MILK

Gal. Crtn. or Plastic \$1.45

FARM MAID CHOCOLATE MILK

39c qt.

FARM MAID SOUR CREAM

39c pt.

FARM MAID LOW-FAT MILK

\$1.25 gal.

California Long White Potatoes

U. S. No 1
10-Lb. Bag \$1.39

16-OZ BOTTLES VERNOR'S

8 pac \$1.99

GAS PUMPS & STORE OPEN 7 a.m. to 10 p.m. 7 Days a Week — U. S. Authorized Food Stamp Store — Daily & Sunday Papers

Community Calendar

Week of June 15-22
1978

Lima Township Board regular meeting dates changed from the first Monday of the month to July 10 and Aug. 14, at Lima Township Hall.

OES family picnic, Wednesday, June 21, 6:30 p.m. at the home of Mr. and Mrs. Charles Stoner, 13375 Noah Rd.

Busy 2-h-1 4-H group will roller skate at Rollerama, 6995 W. Grand River, Brighton, Wednesday, June 21, 7:30 p.m. to 9:30 p.m. Cost \$2. Please invite family and friends. For rides call Mrs. Ottomano at 426-8007. Leave Dexter Township Hall at 7 p.m.

Olive Chapter No. 140 Royal Arch Masons installation of officers Thursday, June 15 at 7:30 p.m. at the Temple. Public invited.

Chicken barbecue, Tri-County Sportsmen Club, 8840 Moon Rd., Saline, Sunday, June 18, 12 p.m. to 5 p.m. Take-outs available. Dinner includes, potato salad, cole slaw, rolls and dessert. Adults, \$3.25; children, \$1.50.

5th annual Old Fashioned Barn Dance, Saturday, June 17, 9 to 2, Charles Trinkle Farm, Trinkle Rd. Public welcome.

Lima Township Planning Commission regular meeting will be held on the second Monday of each month, 8 p.m., at the Township Hall.

Chelsea Co-Op Nursery is now taking applications for the 1978-79 school year. To enroll, call Kay Johanson, 475-7765 or 475-8318.

Lyndon Township Board regular meetings the third Tuesday of each month, 7 p.m., in Lyndon Township Hall.

Chelsea Co-Op Nursery is now taking applications for the 1978-79 school year. To enroll, call Barb Raney, 475-1118 or Sue Machnik, 426-4776.

Chelsea Jaycee membership meeting, First Tuesday of every month, 7:30 p.m., Chelsea Lanes basement meeting room. For information call Charlie Sprawka, 475-1860.

North Lake Co-Op Nursery, Inc., is now taking applications for the 3- and 4-year-old session for the 1978-79 school year. For information call Karen Koch at 475-2874.

Sylvan Township Board meeting the first Tuesday of the month, at 7 p.m., at Sylvan Township Hall.

Dexter-Chelsea La Leche League at the home of Kathy Payne, 14156 Wagon Wheel Ct., Chelsea, Tuesday, June 27, at 7:30 p.m. Topic will be "Art of Breastfeeding and Overcoming Difficulties."

Lyndon Township Planning Commission meets the second Thursday of the month at the Township Hall, 8:30 p.m.

Waterloo Farm Museum, 9999 Waterloo-Munith Rd., will open June 1 for the summer. Trained guides will be pleased to tell you the history of the museum and take you on a tour of the museum and grounds. Admission is charged. Visiting hours are 1 p.m. to 4 p.m. daily except Monday. For more information call 475-1426.

Sharon Township Board regular meeting first Thursday of each month, 8:30 p.m.

Ann Arbor Area Ostomy Association Thursday, June 15, Dr. John Konnak from the U. of M. will speak on Urostomies, 650 W. Huron St., Senior Citizens Guild, Ann Arbor, at 7:30 p.m.

Senior Citizens meet the third Friday of every month. Pot-luck, games, and cards at St. Mary's school, 6 p.m.

Zion Lutheran Bible School Starts Monday

"Hosanna—God's People Praise Him" is the 1978 vacation Bible school theme at Zion Lutheran church on the corner of Fletcher and Waters Rds.

Parish families are encouraged to invite friends and neighbors to the June 19-23 school held to help students "understand God in their lives and provide the resources for response to God through worshipful acts," a church spokesperson said.

There is no registration fee; just enthusiasm for helping and children's interests, abilities, and time. Hours are from 9 a.m. to 11:30 a.m. Monday through Friday.

Scheduled for the school are the following: Age 3 will work under the specific theme "Thank You God" and learn response; ages 4 and 5, "For Wonders of God's Love" and identify God, and call forth acts; grades one and two, "We Worship God," discovering and remembering God and response; grades three and four, "God's People Praise Him," and response; and grades five and six, "Praise and Thank God," identifying acts of God and create responses.

DEATHS

Carl Philip Thoma Chelsea Woman's Father Dies June 3 in Monroe

Carl Philip Thoma, 74, 6221 N. Monroe St., Monroe, died suddenly Saturday, June 3, in Monroe. Born Nov. 3, 1903, in Monroe, he married Ada Odessa Sunday on May 30, 1927. She survives.

He is also survived by six sons, Herbert, Robert, Norman, Douglas, and Philip, all of Monroe, and Harold of Newport; two daughters, Mrs. Vincent (Martha) Cusino of Ida and Mrs. Edwin E. (Mary) Jacobinski of Chelsea; 20 grandchildren; and three great-grandchildren.

Funeral services were held June 5 at St. Mary Catholic church in Monroe. Interment took place in LaSalle.

Mrs. William Donald

Former Ypsilanti Resident Dies at Methodist Home

Mrs. William (Louelle Mae) Donald, 88, a resident of the United Methodist Retirement Home, Chelsea, died at her residence, Wednesday, June 8.

She was born April 20, 1890 in Livingston county, the daughter of Elmer and Mary (Mehlbeg) Shattuck. She married the Rev. William Clyde Donald on Dec. 17, 1917. He preceded her in death on May 24, 1972.

Mrs. Donald was a member of the First United Methodist church in Fenton and a member of the Bay City Chapter No. 219 Order of Eastern Star. She served Methodist churches with her husband in Mt. Clemens, Bay City, Howell, and Pontiac before retiring from Ypsilanti. The Rev. Donald also served as District Superintendent in Flint.

She is survived by one son, Dr. William Clyde Donald, II, of Minneapolis, Minn.; one grandchild, Mrs. Larry Ward of St. Clair Shores; two great-grandchildren, Lisa and Lianne Ward. Three sisters and one brother preceded her in death.

Funeral services were held Monday, June 12 in the United Methodist Retirement Home Chapel with the Rev. Robert Ward and the Rev. Ira Wood officiating.

Burial took place at the Oakwood Cemetery, Fenton. Memorial contributions may be made to the United Methodist Retirement Home. Arrangements were handled by the Burghardt-Cole Chelsea Chapel.

Mrs. Bernice Brayton

Pinckney Resident Dies June 5 at Her Home

Mrs. Bernice Brayton, 70, 355 Putnam St., Pinckney, died at home Monday, June 5.

She was born Oct. 12, 1907 in Monroe Center, the daughter of Bernie and Emily (Brewer) Thayer. She was a member of the Bunker Hill Seventh Day Adventist church and had been a resident of Pinckney since 1954.

She is survived by one son, Jerry of Pinckney; one daughter, Mrs. Robert (Shirley) Dawson of Waterloo; four grandchildren; two brothers, Ira Thayer of Traverse City and Arthur Thayer of Dearborn; and one sister, Mrs. Florence Barbeau of Bay City.

Funeral services were held Wednesday, June 7 at the Swarthout Chapel of the Lamb Funeral Home. Interment took place at the Oakwood Cemetery, Traverse City, with Elder Gordon Stecker of the Bunker Hill Seventh Day Adventist church officiating.

BIRTHS

A son, Damon Charles, Friday, June 2, St. Joseph Mercy Hospital, Ann Arbor to David and Jane McLaughlin. Maternal grandparents are Mr. and Mrs. Kenneth Werner of Sumner, Ia. Paternal grandparents are Russell McLaughlin of Houghton Lake and Jean McLaughlin of Pompano Beach, Fla.

Program for Gifted Students Renewed

A second grant of \$17,000 has been approved by the Michigan State Board of Education for the 1978-79 Chelsea North school Projects Room for Academically Talented children, the state board announced recently.

Chelsea began its program last November as an outlet for talented 1st through 5th graders at North school. "It is a pilot project and funding is provided yearly for three years by the state," Robert Benedict, North school principal and director of the project said. "After three years, funding becomes the responsibility of the local school district, if the project is decided to be continued," he explained.

Last year 45 students participated in the program which is designed to elevate interests in four basic areas including math and science, creative arts, language arts, and humanities.

Classes are co-ordinated by Mrs. Charles Miller although a special aspect of the program is the use of outside talent, including parents and teachers, Benedict explained.

"Children were involved in a variety of projects in astronomy,

sculpture, chess, newspaper writing, and science," Benedict said. "In the science class, they created dinosaurs out of lumber and papier mache and then recorded their procedures on tape," he added.

Selection of students is based on teacher and parent observations and recommendations, and by results of the Stanford Achievement Test. To qualify for the grant, a yearly report is submitted to the state, evaluating student accomplishments. "Our report is based on a survey of student and parent attitudes toward the project and school in general," Benedict explained.

Benedict added that only minor revisions in next year's program will be made in scheduling adjustments.

Chelsea belongs to a growing number of school districts with programs for gifted students. Funds are provided by the state legislature which sets aside \$250,000 each year with about \$132,000 of this amount expected to be spent on new projects to begin next fall.

"We have always been convinced that the pursuit of educational excellence is as important as equality of educational opportunity," State Superintendent of Public Instruction John W. Porter said. "These programs for the gifted allow our more advanced students to explore their own creativity and to realize their full potential," he added.

Dora Alexander Inducted into NMU Honor Society

Dora Alexander, a 1976 graduate of Chelsea High school and a senior in special education at Northern Michigan University in Marquette was recently inducted into the Delta Zeta Chapter of Kappa Delta Pi, an honor society in education at NMU.

Dora ranked in the upper one-fifth of her classes scholastically. She is the daughter of Mr. and Mrs. Donald Alexander, 224 W. Middle St., and expects to graduate next May.

CORRECTION:

In the June 8 edition of The Standard bond figures for the two men arrested May 25 by Chelsea and Manchester police officers and charged with armed robbery, were transposed. Brian Curley was given a \$10,000 bond and John Carr was given a \$25,000 bond.

Summer Reading Program Slated at McKune Library

Summer reading for children of all ages will begin Monday, June 19 at McKune Memorial Library. The program is free and will continue through July 31.

Children who have completed 1st grade will be issued a library card, and those who read 10 books during the program will be given a certificate.

Hours are Monday, and Thursday, 10 a.m. to 5 p.m.; Tuesday, Wednesday, Friday, and Saturday, noon to 5 p.m.; and Monday, Wednesday, and Friday, 7 to 9 p.m.

Hospital Emergency Sign Reported Stolen

An "Emergency" sign for the Chelsea Community Hospital, located on M-52 and valued at approximately \$500, was discovered missing Sunday, June 11, according to Chelsea police reports.

"Construction workers for Michigan Bell had disconnected the electrical sign and set it aside while working in the area. On Sunday the sign was missing," Chief Meranuck said.

The sign is approximately four feet long, one foot wide and eight inches thick.



Aikido Self-Defense Class Offered

A class in the scientific Japanese art of self-defense, Aikido, will be taught by Bob Goyer, Chelsea school psychologist. The class will begin Monday, June 19, and is offered as a program of the Chelsea Recreation Council, with instruction supervised through the Aikido Yoshinkan Association of North America.

Aikido, like Judo and Karate, is a martial art, but differs in philosophy and technique. Many Americans think of the martial arts as "fighting," yet their real goal is to help develop a person's character and to enable him to protect himself without injuring the other person. Aikido means "The Way of Harmony." It is purely defensive, involves no hitting or kicking and no attack. It does not meet force with force, but guides an attacker's strength and momentum so that he is thrown or pinned in a graceful and almost effortless way.

Aikido is a perfect form of self-defense for women, older people, or those who are not unusually strong. It depends not upon muscles, but upon developing a sense of co-ordination, timing, speed, balance, and the ability to remain calm under stress. Medical authorities have described Aikido as the most scientific of the martial arts. Because of its scientifically-based effectiveness and because of

its ability to subdue and control a violent person without injuring him, it is widely used by police departments around the world. It has been widely used by the Tokyo Police Department's Riot Control Squad, by the FBI, and by many local police departments

in Michigan such as Wyandotte and Jackson.

Classes will be taught by Goyer, a Black Belt whose instruction will be supervised by Takashi Kushida (shown in the photograph). Sensei Kushida is a 7th degree black belt and head instructor of Yoshinkan Aikido for all North America.

The class will meet at Chelsea High school, Monday and Wednesday evenings from 6:30 to 8, for the next six weeks. It is open to any Chelsea area resident over 14 years of age, and will cost \$15. To register, or for further information, contact the Chelsea Recreation office above the Police Station (475-7165 from 11 to 5) or call Bob Goyer at 994-5125. No special equipment is needed. Many students will wish to purchase a Judo or Aikido uniform, but this is not necessary. You should wear sturdy, loose fitting clothing without metal buckles, rivets or zippers (sweat pants or draw-string or elastic waist-band trousers of heavy cotton are fine).

Recreation Dept. Baseball Leagues

Standings as of June 9
SLOW PITCH

	W	L
McCalla's	3	0
Village Motors	3	0
Jiffy Mix	2	0
Unadilla Store	2	0
Ann Arbor Eagles	1	0
Chelsea Bank/Greenhouse	1	0
IPSCO	2	1
Wolverine Bar	1	1
Mark IV Lounge	1	2
Dunlavy Farms	0	1
Montange Construction	0	2
Chelsea Automotive	0	2
Dana	0	2
Federal Screw	0	2
Astro Cap	0	3

FAST PITCH

Ann Arbor Centerless	3	0
3-D	2	1
Jiffy Mix	1	2
Captain's Table/Hackney	0	3

Driver Training...

(Continued from page one)
approximately 3 hours on the range according to instructor Pat Wade. Students are offered instruction in both automatic and stick shift driving.

Puritan Knits
the Sporting Life® of
Mostly Cotton for Natural Comfort
It's 60% pure cotton to be exact, blended with 40% polyester. That's like giving it a sturdy backbone. So here's one shirt that resists wilting and wrinkles, needs little or no ironing. Stays looking just great. Sizes S-M-L-XL-XXL
puritan
\$14



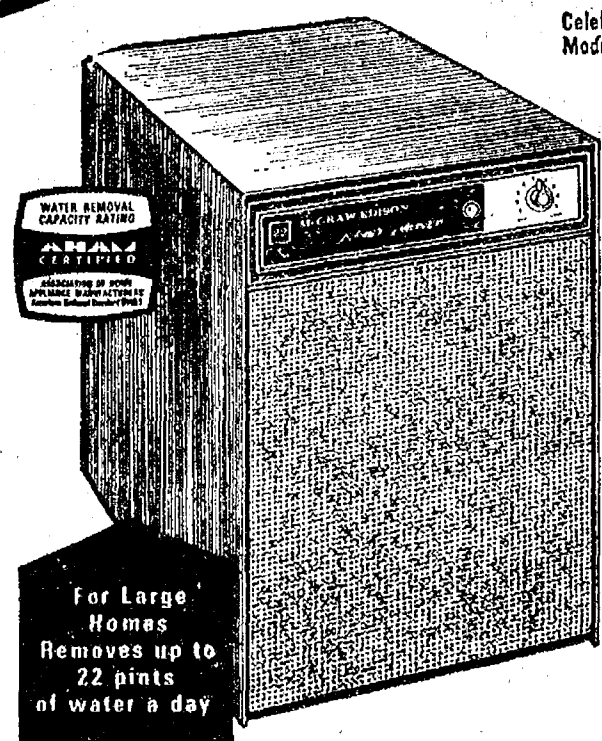
Dad's
Day
Sunday,
June
18th

Dad's
Day
Sunday,
June
18th

STORE HOURS: Open Monday thru Saturday, 8 a.m. to 5:30 p.m.

STRIETER'S Men's Wear
Since 1914

Guard your home against
EXCESS DAMPNESS
the vandal
you can't see or hear



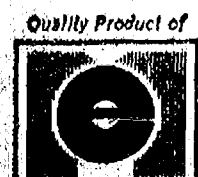
**DRY OUT
DAMP
AREAS WITH
A**

**Coolerator
DEHUMIDIFIER**

Stop damp air damage with this super-capacity "Celebrity" model. It protects your tools from rusting, furniture from warping, clothes from mildew, books and papers from mold, walls and pipes from sweating. Quickly pays for itself in savings.

• Automatic Humidistat • Automatic Overflow Control
• "In Operation" Light • Walnut Grain, Furniture Finished Cabinet

Reg. \$189.95
NOW ONLY **\$169.95**



HEYDLAUFF'S

113 N. Main Ph. 475-1221

GO **GAMBLES**

110 N. MAIN ST., CHELSEA PH. 475-7472

Home Styler™
Flat Latex House Paint
Dress your home
in style.

Put a coat of Home Styler on your house, and watch things brighten up. Your house will keep its good looks for years because Home Styler resists blistering, peeling and chalking. For exterior wood, masonry and metal, ask for Home Styler.

• Wide range of durable colors • Acrylic flat finish • Easy to apply — fast drying • Soap and water clean-up • Free of lead hazards

**MARTIN
SENOUR
PAINTS**



\$9.99
Reg. \$12.50 gal.

Real Estate

By PAUL FRISINGER

ESCROW

One word used frequently in action and is not released to the real estate matters but not too well understood by the layman is the word "ESCROW."

This word normally pops its head with regard to "deposit" or "earnest money" paid at time of signing a purchase and sales agreement. This deposit is held in "escrow" or a "trust" account until the closing. The word "ESCROW" may occur again at the culmination of the sale of a home if any of the terms of the purchase and sales agreement are incomplete. This sum of money is placed in the hands of an impartial party (usually the attorney or the bank) by one party of the trans-

For example, if there is painting or landscaping to be completed at the time of the closing, the money for this work can be held in escrow until it is completed. In this way, the passing of title will not be held up until the job is completed, yet both parties are protected.

If there is anything we can do to help you in the field of real estate, please phone or drop in at FRISINGER REALTY CO., 835 S. Main St., Chelsea, Phone: 475-8881; evenings 475-2621. We're here to help!

FFA Chapter Holds Anniversary Banquet

Chelsea Future Farmers of America, FFA, recently concluded the year of activities with a 50th anniversary banquet at the high school. The meal was held in the cafeteria with ham and rolls and dishes to pass.

Agenda began with opening ceremonies under the spotlight in the auditorium. Special guests were introduced including former presidents, and past DeKalb winners, and past advisors. Slides were shown of the chapter's past activities. Guest speaker was Bill Cline, state officer from Portland.

Awards were presented at the banquet. Seed sales, Debbie Harrison, 1st; Cindy Welshans, 2nd; and Shelly Hatt, 3rd. Proficiency awards went to Turf and Landscape Management, Neil Koch; poultry, Keith O'Neill; home and farm improvement, Shelly Hatt; swine, Cindy Welshans; beef, Shelly Hatt; agriculture processing, Patti Shoemaker.

Horse production, Lucy Bott; sheep production, Dan Grau; diversified livestock, Jeff Osentoski; top of the SAE ladder, Debbie

Harrison; top of the activity ladder, Cindy Welshans; leadership, Vic Verchereau; scholarship, Kent Bollinger; star greenhand, Jeff Osentoski.

Star chapter farmer, Cindy Welshans; DeKalb award, Tim Welshans; and other awards were presented to Robert Ball and Loren Heller as honorary chapter farmers; chapter farmer, Cindy Welshans; Mark Lesser, Kent Bollinger, and Patti Shoemaker.

Concluding the banquet, new officers inducted were Shelly Hatt, president; Cindy Welshans, vice-president; Becky Harrison, treasurer; Patti Shoemaker, reporter; and Kent Bollinger, sentinel.

Chiropractor Will Walk to White House

Chelsea Chiropractor Dr. Jerald Flinn will be joining several thousand other doctors in Washington, D.C. shortly to participate in a "walk for your health rights."

From June 30 to July 4, some 7,800 doctors of chiropractic are expected to attend a research seminar and prepare a petition for delivery to the White House. The doctors and their families, assistants and patients will stage a walk from the Capitol to the White House to deliver a petition bearing several million signatures obtained in chiropractic offices across the country.

The petition reads: "We, the following concerned American citizens, petition you, our President, senators and congressmen, to support and vote for a freedom of choice of doctors and health care; the freedom to have full and complete chiropractic health care provided us just as medical, surgical and osteopathic care is provided in all programs such as national health and accident insurance, Medicare, Medicaid and Veterans Administration and Civil Service."

In addition to participating in the walk to the White House, Dr. Flinn will attend classes on the latest work being done in the chiropractic profession. Joining the doctor will be his wife, Pat, daughter Larie, mother-in-law Evelyn Marshall, and his assistant, Joan Ernst, C.A.

Please Notify Us of Any Change in Address

THE CHELSEA STANDARD

Second Section

CHELSEA, MICHIGAN, THURSDAY, JUNE 15, 1978

Pages 7-12



WAITING FOR THE TRAIN: Nearly 83 third graders from South school and 23 teachers and parents waited patiently for the Amtrak train to take them to Ann Arbor on Wednesday afternoon, June 7. Some dressed in pioneer costumes, the group first arrived at the Chelsea station with their picnic lunches where the train was to make a special stop at 12:43 p.m. A delayed train, however, postponed the trip until approximately 1:20 but "everything went fine, the kids were thrilled and so were some of the parents who had never been on a train before," third grade teacher Mrs. David

Prohaska said. When the train didn't show the first time, everyone went back to school to eat their lunches and returned to board the train a half hour later. "The only real problem was that the trip was too short," Mrs. Prohaska said. Because of the tardy train, the group immediately boarded Chelsea buses when they arrived in Ann Arbor and returned to Chelsea. The field trip was one part of a series of week-long activities which centered around the theme of American pioneer days.

Six Chelsea Students Join in YFU Program

Gayle Albrecht, Elizabeth Flanagan, Laurie Hastings, Mary McCallum, Mary Noah, and Susan Schafer have been accepted as exchange students in the Youth For Understanding program.

As part of the Youth For Understanding exchange program, these six Chelsea students will live overseas with host families in other countries.

Gayle Albrecht, 17, daughter of Mr. and Mrs. Gary Albrecht, will spend a year in Germany with her host family. A junior at Chelsea High school, Gayle has been active in forensics, drill team, and choir.

Elizabeth Flanagan, 18, daughter of Mr. and Mrs. Larry Flanagan, will be spending her summer in Sweden. A senior in high school, she has been involved in varsity cheerleading, debate, forensics, Student Council, and active as a senior class officer. Beth enjoys skiing, swimming and tennis.

Laurie Hastings, 16, daughter of Dr. and Mrs. Stephen Hastings, has chosen to spend her summer in Switzerland. A sophomore in high school, she has been active in girls varsity track. Laurie's interests include raising dogs and working with animals.

Mary McCallum, 15, daughter of the Rev. Marvin McCallum, left for the 11-month program in Australia on Jan. 17 of this year. Mary is presently attending school and is active in many school activities, such as softball, and has done much traveling. Mary's host family has three girls, one of which is her own age. Mary will return home Dec. 18.

Mary Noah, 16, daughter of Mr. and Mrs. Lynwood Noah, will spend her summer with a host family in Mexico. She is currently taking Spanish II. A junior in

high school, Mary is active in the National Honor Society and 4-H, and enjoys playing her flute and sewing.

Susan Schafer, 16, daughter of Mr. and Mrs. Robert Schafer, will be spending a year in France. A sophomore at Chelsea High school, she is currently taking French III classes and is active in band.

Sue's hobbies include music and travel.

Youth For Understanding is a non-profit international student exchange organization which has exchanged more than 55,000 students world-wide. Students aged 14-18 may participate in the program and live with a local family in any of 23 countries in Europe,

Latin America, the Far East or Africa for a summer or a year.

Students or their parents interested in information on the program YFU overseas program, or in hosting an exchange student from one of 23 countries should contact Mrs. James (Barbara) Parker, 6225 Webster Church Rd., Dexter.

475-2030
475-8765

115 PARK ST.
CHELSEA, MICH.

MAYER AGENCY

(of Springer-Kleinschmidt Agency, Inc.)

Your Local Independent Insurance Agency providing dependable protection and prompt claim payment through 10 of the nation's leading insurance companies.

HOME - AUTO - BUSINESS INSURANCE



Sheridan W. Springer

Ruth DeVine

Charles A. Kleinschmidt

Micky Quackenbush

RICK'S MARKET

20490 M-52

"The Store with the Spartan on the Door"

Phone 475-2898

PURINA
MEOW
MIX

18-Oz.
Box

63¢

BISQUICK
BAKING
MIX

60-Oz.
Box

\$1.37

SPARTAN NON-FAT
DRY
MILK

32-Oz.
Box

\$2.29

KRAFT
VELVEETA
CHEESE

32-Oz.
Box

\$2.29

CARNATION INSTANT

MALTED MILK 15-Oz. Pkg. \$1.39

RICK'S HOT BREAD DAILY

Weekdays by 3:30 p.m. Sat. & Sun., by 10:30 a.m.

(QUANTITY RIGHTS RESERVED)

BORDEN
COTTAGE
CHEESE

Large or Small Curd

16-Oz.
Crtn.

69¢

CHEF BOY-AR-DEE
LASAGNA
DINNER

23 7/8-Oz.
Box

\$1.49

BORDEN
LO-FAT
MILK

Plastic
Gallon

\$1.29

ECKRICH
SLICED
BOLOGNA

1-Lb.
Pkg.

\$1.49

OLD FASHIONED
QUAKER
OATS

42-Oz.
Box

\$1.15

DEL MONTE
Cream Style
CORN

4 17-Oz.
Cans

\$1.00

GREAT
GIFTS
for
DAD

TIES
BILLFOLDS
BELTS
Suspenders
SOCKS
Underwear

Foster's
Men's Wear

FATHER'S DAY SALE!

LAST 3 DAYS - JUNE 15-16-17

ALL SUITS
& SPORTCOATS

IN STOCK

25% Off

(ALTERATIONS EXTRA)

LINED AND UNLINED

SPRING
JACKETS

BY CAMPUS

25% OFF

Hanes Colored
UNDERWEAR

1/3 OFF

BRIEFS: 30-38 WAIST
T-SHIRTS: S-M-L-XL

BURLINGTON
SUPPORT
HOSE

Reg. \$5.00 \$3.95

American Express, Master Charge and Visa Cards Welcome.
FREE GIFT WRAPPING

FOSTER'S
MEN'S WEAR

Ads
Taken
Till 1 p.m.
Tuesday

PUT IT IN THE CHAIN FOR RESULTS

Just
Phone
475-1371

WANT ADS

The Chelsea Standard

WANT AD RATES

PAID IN ADVANCE—All regular 40-50 word ads, 15 cents per line. 20 words or less, each insertion. Count each line as a word. For more than 30 words, add 3 cents per word for each insertion. "Blind" ads or box numbers add 35c extra per insertion.

CHARGE RATES—Same as cash in advance, with 25 cents bookkeeping charge. No refund before 1 p.m. Tuesday preceding publication. Pay in advance. Send cash or stamps and save 25 cents.

DISPLAY WANT ADS—Rate, \$1.00 per line. Single column, 10 lines. 10 lines or more, 90¢ per line. No borders or boldface type. Minimum 1 inch.

CLASSIFIED WANTS or MEMORIALS—Single paragraph style, 1.00 per line for 30 words or less, 5 cents per word beyond 30 words.

COPY DEADLINE—1 p.m. Tuesday week of publication.

REPRINTS—Advertisers should check their ads for errors. The publisher will not be liable for errors in the ad wherein the error occurred. Errors in publication accepted for the cost of the ad for the first week's insertion. Adjustment for errors in the third week of publication.

Fireplace Builder

Field stone mason, block and brick mason, rock pointing.
FREE ESTIMATES
Call 475-8025 after 3 p.m.

Patrick Grammatico

740tf

BODY SHOP

COMPLETE FULL TIME
Estimates Available

PALMER FORD

222 S. Main 475-1301
40tf

GREAT GIFTS for Dad at Foster's Men's Wear. Pajamas and robes by Pletway.

STEP UP TO

KOZMA CONSTRUCTION

And Step Down In Price

LICENSED BUILDER

FREE ESTIMATES COMPLETE

CONSTRUCTION SERVICES

CALL LEN KOZMA

475-7452 29tf

J. R. CARRUTHERS

LICENSED RESIDENTIAL BUILDER

CUSTOM HOMES

ADDITIONS/FIREPLACES

PATIOS

ROOFING/SIDING/REPAIRS

475-7234

CHELSEA 30tf

WANT ADS

SIGNS

- FOR SALE
- EXIT
- NO SMOKING
- FOR RENT
- KEEP OUT
- NO HUNTING
- NO SWIMMING

The Chelsea Standard

300 N. Main St.
Chelsea, 475-1371

GREAT GIFTS for Dad at Foster's Men's Wear. Short-sleeved knit shirts by Arrow, Mustangwear, Norris and Campus.

OPEN HOUSE

Sunday, June 18

2 p.m. to 5 p.m.

3050 McKinley, Chelsea

2,700 SQ. FT. huge ranch on 3 acres, 3 miles northeast of Chelsea. 4 bedrooms, 1 1/2 baths, family room, dining room, study, sewing room, stone fireplace, swimming pool, horse barn and corral. Country living at its best! \$75,900.

Blanchard & Associates, Inc.

Office 769-9492

EVES:

Virginia Blanchard 475-2521
Pat Sands 995-2032
Sue Stahl 663-2474
Alex Gantz 994-5024
Dave Blanchard 971-3419

GARAGE SALE — Lanewood, 52 Chestnut Dr., June 16 and 17, 9 to 9. Something for everyone. Crago mag wheels, extra large dog house (very well insulated), covered trailer, car boat rack, fold-up table tennis table, small electrical appliances, books, toys, games, clothes, etc.

CUSTOM SEWING and alterations: Ph: 475-2248 38tf

HILLTOP, INC.

8316 Werkner, Chelsea

WE DO IT ALL!

PLUMBING, HEATING, ELECTRICAL, SEPTIC TANKS and DRAINFIELDS

CALL FOR:

Repair - Remodeling

or Contracting

by "THE SPECIALISTS"

Robert Shears, Master Plumber

Gail Shears, Journeyman

FREE ESTIMATES—475-2949

Serving the area since 1953

A KOHLER DEALER 48tf

Floor Tile Installed

Residential and commercial. All work guaranteed. Free estimates.

Call 475-8621

Merkel

Home Furnishings 51tf

WANT ADS

FOR SALE — Queen-sized bed, mattress and box springs. Two dressers, one with mirror. All made, Early American. Ph. 475-9435 after 5 p.m. 47tf

WE HAVE LISTINGS in the Dexter, Chelsea, and Lakes areas. Call us for your next home.

ED COY REALTY

428-3945

Member Ann Arbor Board of Realtors

Ed Coy 428-8235

Rae Kozlowski 428-8874

List your home with us 10tf

LAND CONTRACTS & MORTGAGES wanted—Land contracts, purchased, any amount, anywhere in Michigan. Lowest discounts. Can also make real estate mortgages. Call Dan Duncan at any time. Ann Arbor Real Estate Co. 865-8595.

Automotive

Rust Proofing

Cars and Trucks

Village

Motor Sales, Inc.

CHRYSLER — DODGE

PLYMOUTH — DODGE TRUCKS

Phone 475-8661

1185 Manchester Rd., Chelsea

Hours: 8 a.m. to 5:30 p.m.

Tues. thru Fri. Until 8 Monday

9 a.m. to 1 p.m. Saturday 21tf

THORNTON

475-8628

A TRUE VALUE — Great family home offering many quality features. Anderson windows, large deck off family room, rec. room and bar in walkout basement. 4 bedrooms. 2-plus acres. \$87,500.

YEAR AROUND ACTIVITIES can be enjoyed when you own this super family home. Fronts on Half Moon Lake. 3 bedrooms and fireplace. Lots of trees and sandy beach. \$65,900.

THE RIGHT PRICE—Just \$74,900! Newer 2,150 sq. ft. home in excellent condition. Enjoy 2 fireplaces! 4 bedrooms, 1st floor laundry. On 2 acres with outbuilding and fenced area for horse. Chelsea schools.

\$35,900 — Nice 'n' neat 2- or 3-bedroom ranch on an acre. Hardwood floors, cedar closets and more. Perfect for the young couple. Located just outside Stockbridge village limits.

VACANT LAND

ROLLING 3-plus acre building site. Chelsea schools. \$15,000.

ALREADY PERKED — 10 acres with easy access to I-94. Wooded with pine trees. \$19,500.

BEAUTIFUL — High and rolling 10 acres. Backs up to state land. 2 1/2 miles to Chelsea. \$20,000.

ROBERT H. THORNTON

JR., P.C. REALTOR

EVENINGS:

George Knickerbocker 475-2646

Helen Lancaster 475-1198

Barb Rybak 475-8499

Mark McKernan 475-8424

Lana Ramsey 475-8138

Chuck Walters 475-2208 1tf

McCulloch

Portable Generators

Chain Saws

WE SELL, SERVICE, SHARPEN AND TRADE.

Chelsea Hardware 21tf

FOR SALE — 1971 Dodge. 55,000 actual miles, new tires, new transmission, good condition, \$500. May be seen at 13656 Old US-12 E., Chelsea. x3

EXCELLENT CONDITION — 3-bedroom older home with large kitchen and living rooms, dining room and first-floor laundry. Huge yard. \$41,500.

MODERN RANCH — Well-designed 3-bedroom home with 2 full baths, nice kitchen and dining area on 2 acres. \$47,500.

INVEST in this older home in the village. Good location with 7 bedrooms, nice yard and 2 1/2-car garage. \$55,900.

Pierson & Riemenschneider

REALTORS

111 Park St. - 475-9101

EVES:

Jeanene Riemenschneider 475-1469

John Pierson 475-2084

Patrick Merkel 475-1824 11tf

10 WOODED ACRES — Manicured, beautiful area in beautiful hardwood forest, excellent hunting and fishing location, \$4,995 with \$500 down and \$50 per month on 8 percent land contract, survey and title insurance provided. Call 616-533-6436, day or evening or write Northern Land Company, Box 217, Bellaire, Michigan 49615.

BECKER MEMORIALS

6033 Jackson Road ANN ARBOR, MICHIGAN

WANT ADS

LEONARD REITH

Master Plumber

Licensed Electrician

Hot Water Heat

18238 N. Territorial Rd.

Chelsea, Mich. 48118

Phone: 475-2044 32tf

FOR RENT:

Music Machines

Juke Boxes

for Parties, Receptions or Any Special Gathering.

CALL

Zemke

Operated Machines

Days 662-1771 x38tf

RON MONTANGE CONSTRUCTION

—Full carpentry services (rough & finish)

—Additions & remodeling

—Garages

—Repairs

—Roofing and Siding

—Cabinets & formica work

—Farm Buildings

—Excavating & trenching

QUALITY WORKMANSHIP. FREE ESTIMATES

Ph. 475-1080 19tf

We Buy

Land Contracts

LARGE OR SMALL, residential or commercial. Lowest discount in Michigan. Ph. Dan Duncan, Ann Arbor Real Estate Co., Realtors. 698-8595.

TRAILER SPACE for rent in Chelsea Mobile Home Park. Small or medium trailers only. Ph. 1-563-3344. x51tf

GREAT GIFT IDEA for Dad — A gift certificate from Foster's Men's Wear. x34tf

Pierson & Riemenschneider

475-9101

NEW LISTING — Older home in the village on approximately 3 acres. 3 bedrooms and 3-car garage. \$38,000.

EXCELLENT CONDITION — 3-bedroom older home with large kitchen and living rooms, dining room and first-floor laundry. Huge yard. \$41,500.

MODERN RANCH — Well-designed 3-bedroom home with 2 full baths, nice kitchen and dining area on 2 acres. \$47,500.

INVEST in this older home in the village. Good location with 7 bedrooms, nice yard and 2 1/2-car garage. \$55,900.

Pierson & Riemenschneider

REALTORS

111 Park St. - 475-9101

EVES:

Jeanene Riemenschneider 475-1469

John Pierson 475-2084

Patrick Merkel 475-1824 11tf

10 WOODED ACRES — Manicured, beautiful area in beautiful hardwood forest, excellent hunting and fishing location, \$4,995 with \$500 down and \$50 per month on 8 percent land contract, survey and title insurance provided. Call 616-533-6436, day or evening or write Northern Land Company, Box 217, Bellaire, Michigan 49615.

MAUSOLEUMS ★ MONUMENTS

BRONZE TABLETS ★ MARKERS

BECKER MEMORIALS

6033 Jackson Road ANN ARBOR, MICHIGAN

WANT ADS

CORRECTIVE HORSESHOEING and trimming. Mike Brisbols. Ph. 563-3036. x45tf

VACUUM CLEANERS

Authorized Electrolux sales and service.

James Cox

428-9444, or 428-9688

118 Riverside Dr., Manchester 48tf

ATTIC INSULATION

Class I

Cellulose Insulation

installed by trained installers

FOAM WALL INSULATION

Highest thermal efficiency of any insulation type.

New and Existing Construction.

FOAM MASTERS

Complete insulation contractor

Licensed and Insured.

475-1625

Free Estimates x31tf

QUASAR TELEVISION

Sales & Service

Service on most major brands. Also, antenna installation and antenna supplies.

PORTER'S TV

212 Buchanan St., Chelsea

Ph. 475-8380

— YOUNG —

We list and sell lake, country and town properties. Eugene Young, Real Estate & Builder. 878-3799. 11598 Dexter-Pinckney Rd., Pinckney 48169. x34tf

PIANO TUNING and repair. Qualified technician. Call Ron Harris, 475-7134. -10tf

CHELSEA

NEW LISTING — Village of Chelsea, 3 bedrooms, 1 1/2 baths, dining room, nice fenced yard, screened porch, 1 1/2-car garage, \$49,900.

BRUN LAKE ACCESS — 2-bedroom mobile home with 14'x17' kit. and dining room, living room 14'x17' and family room 12'x24', new red barn garage.

PATTERSON LAKE — 2-bedroom, family room, good year-round home, access to lake, \$33,900.

HALF MOON LAKE — 2-bedroom log home, walk-out basement, lots of mature trees, \$48,500.

\$33,000 — 2-bedroom summer home on Patterson Lake, fenced yard, Pinckney schools.

\$54,900 — 3-bedroom remodeled home, Patterson Lake, solid oak cupboards, electric fireplace, 2-car garage, safe sandy beach.

VACANT PARCELS

4.9 ACRES, Chelsea schools.

10-PLUS ACRES, Chelsea schools.

10 ACRES, Grass Lake schools.

13 ACRES, Chelsea schools.

FRISINGER REALTORS

Chelsea 475-8681

EVES:

Herman Koenn 475-2813

Toby Peterson 475-2718

Bob Koch 475-4754

Paul Frisinger 475-2621

Paul Erickson 475-7322

Ray Knight 475-9230

George Frisinger 475-2903 x1tf

AMERICAN LEGION HALL Rental — \$75-125. Ph. Terry White-sail, 475-9534, or Tom Dunlap, 475-1740. 11tf

CASH FOR LAND CONTRACTS

Any type of real estate throughout Michigan. No commissions or closing costs. First National Accept. Call Free 1-800-292-1550.

WANT ADS

ROOMS by day, week or month. Excellent for the single man or retiree. Sylvan Hotel, Chelsea. Ph. 475-2911. x31tf

Many Unusual Means of Travel Offered Throughout Michigan

Traveling in Michigan can be as offbeat as floating in a hot air balloon, a trip by chairlift, hang gliding or riding a driverless people mover, reports Automobile Club of Michigan.

For a journey into the past, take a paddle wheel boat cruise or try a ride on a steam engine, horse-drawn carriage, Model T or old-fashioned trolley car.

To explore the world of hot air ballooning, contact one of three Southeast Michigan firms. Trips covering about eight miles and lasting up to two hours cost between \$75 and \$150 for one person. If the pilot carries two passengers in the wicker basket, the cost varies from \$50 to \$87.50 each.

Reservations may be made by calling Balloon Corp. of America, Flint (313-767-2120); Cameron Balloons US, Ann Arbor (313-985-

0111), or HighAmerica Ballooncenter, Rochester (313-852-0686).

A ride on the 810-foot chairlift to the summit of Copper Peak, the ski flying hill near Ironwood, offers a view of Michigan, Wisconsin, and Minnesota forests contrasted against the blue water of Lake Superior. For information call (906) 932-3500.

For a different view of Lake Michigan, take hang gliding lessons at Warren Dunes State Park near Bridgman. A day's lesson from the Midwest School of Hang Gliding (616-426-3100) costs \$50 and entails being strapped into a harness attached to a 30-foot-wide sail, then being coaxed off a 20-foot training slope for a try at soaring.

The computer-controlled electric people mover linking Dearborn's Fairlane Town Center shopping complex and the Hyatt Regency Hotel glides over 2,000 feet of elevated guideway in less than two minutes. There is no charge to ride the orange and white cars, which operate daily year-around.

Dearborn's Greenfield Village (313-271-1620) offers several rides from the past. They include a 10-minute spin in a chauffered Model T car, a 45-minute horse-drawn carriage tour, a ride on a train pulled by an 1875 steam engine and a cruise aboard the Swanee, a restored 1888 paddle wheel riverboat.

Other paddle wheel boat rides include the Westwood River Queen (616-363-5104), which makes two-hour cruises on the Grand River at Grand Rapids, and the Au Sab-

le River Queen Boats (517-728-9871 or 739-7351), west of Oscoda at Foote and Five Channels dams.

The Huron-Clinton Metropolitan Authority (313-961-5865) can supply information about its paddle wheelers—the Dixie Belle at Metro Beach Metropark near Mount Clemens and the Island Queen at Kensington Metropark near Milford.

On Mackinac Island, where motor vehicles are banned, visitors can take a 1½-hour circle tour by horse-drawn carriage.

Other Michigan railroad attractions include the Boyne Valley Railroad (616-582-2232), which makes a 7.2-mile run between Boyne City and Boyne Falls, and the steam fired Huckleberry Railroad (313-785-7803 or 736-7100), which passengers board at the Davison Depot in Historical Crossroads Village near Flint for a 9.5-mile round trip through Genesee Recreation Area.

Passengers on the Soo Locks Tour Trains (906-635-5912) ride into Canada across the International Bridge. A close-up view of the locks is provided by the Soo Locks Boat Tours (906-632-6301 or 632-2512), which pass right through the world's busiest and longest locks.

Another way to Canada is by excursion boat from Detroit to Bob-Lo Island in the Detroit River. Boats to the Canadian recreation island sail several times daily from Memorial Day week-end through Labor Day.

Passengers and autos may travel by ferry across the St. Clair River to Canada or across Lake Michigan to Wisconsin. Almost continuous ferry service is offered daily between these points: Algonac and Walpole Island-Wallaceburg, Ont.; Marine City and Sombra, Ont.; and Roberts Landing and Port Lambton, Ont.

To get from Michigan to Wisconsin, take the Chessie System Autoferry (313-552-5000, Detroit; 616-456-9801, Grand Rapids, and 616-843-2521, Ludington) from Ludington to Milwaukee, Manitowac and Kewaunee or ride the Ann Arbor car ferry (800-632-0972) from Frankfort to Kewaunee. Both services operate year-around with regularly scheduled trips only during summer.

While the trip across Lake Michigan takes several hours, the Ironport Ferry crossing of Lake Charlevoix from Ironport to Boyne City takes less than five minutes. The ferry is pulled across the lake on cables, and the ride costs just 50 cents.

For 25 cents, visitors to downtown Detroit can ride the old-fashioned trolley car which runs up and down Washington Boulevard between Grand Circus Park and Cobo Hall.

For a ride up and down desert-like Lake Michigan sand dunes, try Goshorn Lake Dune Schooner Rides near Holland (616-857-2253) or Sleeping Bear Sand Dunes Rides near Glen Haven (616-334-3191).

Former CHS Student Graduates With Honors At Satellite Beach, Fla.

Colleen Nusca, a former CHS student, returned to Chelsea from Florida this past week to visit with friends and to attend the local graduation ceremonies.

A 1978 graduate of Satellite Beach (Florida) High school, Colleen will attend Beloit College in Beloit, Wis., and major in pre-law and languages. She was recently selected as a Beloit Presidential Scholar for the Class of 1982, an award given in recognition of "academic attainments, leadership ability, and service to school and community." Ten of these four-year scholarships were awarded nationwide by Beloit.

Colleen is the daughter of Mr. and Mrs. Raymond Nusca of Satellite Beach, Fla., who formerly resided in Chelsea.

Please Notify Us of Any Change in Address



1. Bridgman — Hang gliding lessons at Warren Dunes State Park; for appointment, call Midwest School of Hang Gliding, (616) 426-3100.
2. Holland — Goshorn Lake Dune Schooner Rides, (616) 857-2253.
3. Grand Rapids — Westwood River Queen paddle wheel boat rides on Grand River, (616) 363-5104.
4. Ludington — Chessie car-passenger ferry to Manitowac, Milwaukee and Kewaunee, Wis.
5. Frankfort — Ann Arbor car-passenger ferry to Kewaunee, Wis.
6. Glen Haven — Sleeping Bear Sand Dune Rides, (616) 334-3191.
7. Ironport — Car-passenger ferry across Lake Charlevoix to Boyne City.
8. Boyne City — Boyne Falls Railroad, seven-mile trip to Boyne Falls, (616) 582-2232.
9. Mackinac Island — Carriage rides.
10. Ironwood — Copper Peak Chairlift.
11. Sault Ste. Marie — Soo Locks Boat Tours through American and Canadian locks, (906) 432-6301; Soo Locks Tour Trains across International Bridge, (906) 635-5912.
12. Oscoda — AuSable River Queen paddle wheel boat rides, from Foote and Five Channels dams, (517) 728-9871 or (517) 739-7351.
13. Flint — Hot air balloon rides; for appointment, call Balloon Corp. of America, (313) 767-2120; Huckleberry Railroad at Crossroads Village.
14. Marine City — Car-passenger ferry to Sombra, Ont.
15. Roberts Landing — Car-passenger ferry to Port Lambton, Ont.
16. Algonac — Car-passenger ferry to Walpole Island-Wallaceburg, Ont.
17. Rochester — Hot air balloon rides; for appointment, call HighAmerica Ballooncenter (313) 852-0686.
18. Mount Clemens — Dixie Belle paddle wheel boat, Metro Beach Metro Park.
19. Milford — Island Queen paddle wheel boat ride, Kensington Metro Park.
20. Ann Arbor — Hot air balloon rides; for appointment, call Cameron Balloons US, (313) 995-0111.
21. Detroit — Washington Boulevard trolley; excursion boats to Bob-Lo Island in Detroit River.
22. Dearborn — Greenfield Village rides on Model T, Swanee riverboat, horse-drawn carriage, steam engine, train; people-mover at Fairlane Town Center shopping complex.

SAFETY TIP: Be sure to use your directional signals when changing lanes or turning. It alerts other drivers and helps prevent accidents.



DANA SERVICE AWARD: Leonard Freilermuth, Accutron watch in honor of the occasion by his left, completed 25 years of service with Dana supervisor Ralph J. Pybus on June 5. Corp. Chelsea plant and was presented a Bulova



Donald A. Roth, Community Relations Manager, Ann Arbor, reminds you;

There are things you can do to control the cost of your phone bill.

We are constantly searching for ways to help you economize on your phone service, but here are just a few ideas on how you can help yourself:

Call when it's least expensive. For example, when you're calling long distance, dial direct and plan your calls for times when the rates are lowest.

Budget Service that's really low budget! Look into the availability of Budget Service if you don't make a lot of phone calls every month. It's the least expensive one-or-two party phone service we offer.

Plan to have all your service installed in one visit. For instance, if you move, plan carefully so the installer doesn't have to make extra trips, for which you may have to pay additional charges. And while you're planning for new service, make sure it's going to be the kind most suited to your needs.

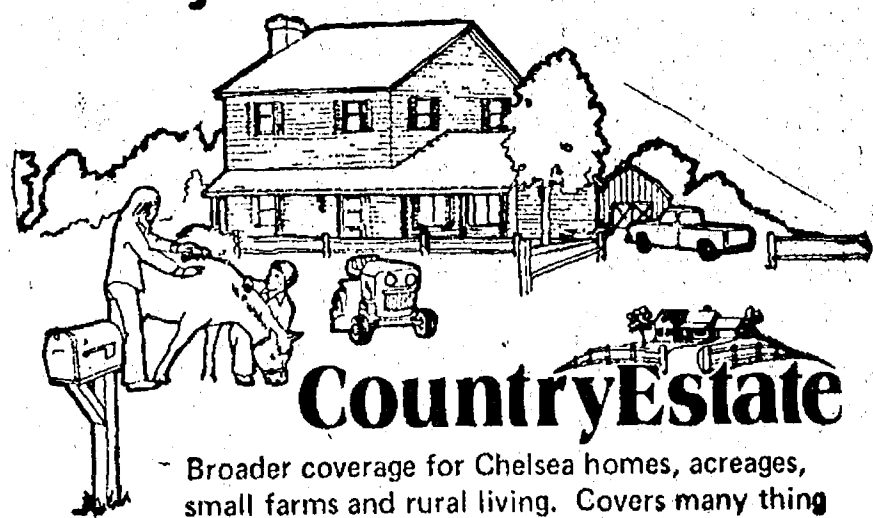
Sometimes, little tips can save you a surprising amount over the long haul. We'll keep trying to help you save.

Michigan Bell... people who enjoy serving people.



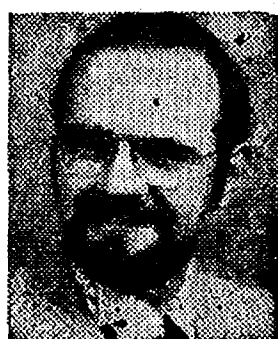
Michigan Bell

Because your home is not just a house



CountryEstate

Broader coverage for Chelsea homes, acreages, small farms and rural living. Covers many things not protected by homeowners... often at a lower premium. Let us show you.



Dave Rowe

I'm at 107½ S. Main in Chelsea. Stop in or phone 475-8065.

FARM BUREAU INSURANCE GROUP

FARM BUREAU MUTUAL • FARM BUREAU LIFE • COMMUNITY SERVICE INSURANCE

The Do-It-Yourself Home The home you thought you couldn't afford and the financing you thought you couldn't get.

- LOW COST FINANCING
- 24 PLANS YOU CAN CUSTOMIZE
- QUALITY CONSTRUCTION

MAIL THE COUPON OR CALL YOUR CENTENNIAL SALES REPRESENTATIVE:



Department YP 278
CENTENNIAL HOMES, INC.
5331 Plymouth Road
Ann Arbor, Michigan 48105 • 313/769-5010
Please rush me your New Homes Idea Book — with no cost or obligation.

NAME _____
ADDRESS _____
CITY/TOWN _____ COUNTY _____
STATE _____ ZIP _____ PHONE _____
☐ We own/are building lot. ☐ We can buy a building lot.
☐ We plan to build soon.

Tour To Promote June Dairy Month Thomas Stringer Files Petitions for Primary Ballot

Memory, a champion Holstein dairy cow, will travel more than 5,000 miles in her "March for Milk" during June Dairy Month. She started from the Canadian border, North of Roseau, Minn., on May 31; will travel south to the Mexican border, Laredo, Tex., on June 20; and back home to Minneapolis by June 30.

Purpose of the trip is to salute the American dairy industry, the nutritional benefits of milk products, and the dairy cow which has made it all possible.

Thomas L. Stringer of Dexter filed the necessary petitions on June 1 in Lansing, to become an official candidate in the 23rd District state representative contest.

Stringer, an attorney, will run as a Republican, as he believes his conservative, somewhat rural background combined with his legal experience will serve well the people of the 23rd District. The Republican primary for the seat will be held on Aug. 8.

SALE on CRAIG CAR STEREO RADIOS

- Model No. L-600 IN-DASH AM-FM 40-CHANNEL CB. Reg. \$250NOW **\$175.00**
- 1902 IN-DASH AM-FM STEREO RADIO Reg. \$120NOW **\$99.95**
- 5630 IN-DASH AM-FM 8-TRACK Reg. \$190NOW **\$154.95**
- 3516A IN-DASH AM-FM CASSETTE Reg. \$180NOW **\$149.95**
- T680 IN-DASH AM-FM CASSETTE WITH POWER PLAY Reg. \$200.NOW **\$159.95**

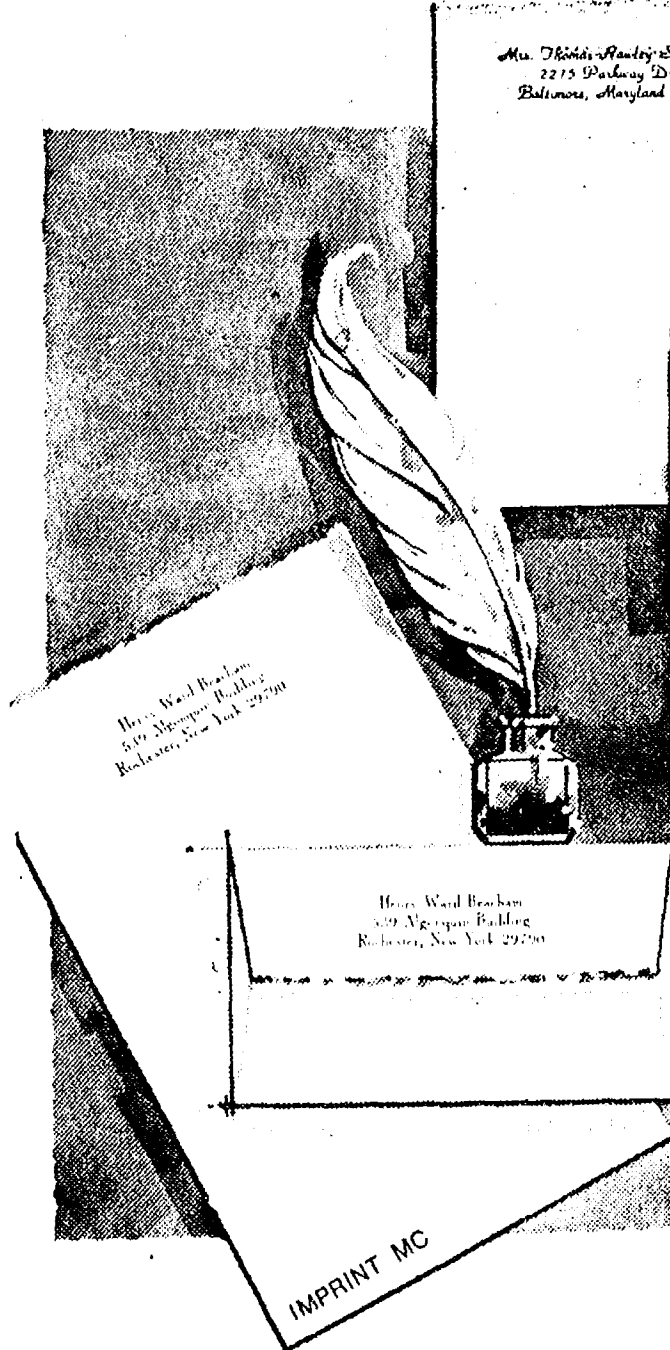
Limited Supply on Some Models

HEYDLAUFF'S

113 N. Main St., Chelsea

Ph. 475-1221

The Chelsea Standard



June Sale Save 50% Rytex Deckle-Edge Vellum Personalized Stationery 6.95
Regularly 14.00

THE CHELSEA STANDARD

300 N. MAIN ST., CHELSEA, MICH. 48118

Please send _____ Boxes DECKLE EDGE VELLUM on sale at \$6.95 a box.

Include Bonus: ☐ (check) 50 extra, plain sheets at \$2.00 each box.

Imprint Name _____

Address _____

City/State/Zip _____

Check choice of: paper size & color, imprint style and ink color

Princess Size: ☐ White (9401) ☐ Blue (9451) ☐ Grey (9461)

King Size: ☐ White (9101) ☐ Blue (9151) ☐ Grey (9161)

Imprint: ☐ HL ☐ MC

Ink: ☐ Blue ☐ Grey ☐ Raspberry

ORDERED BY _____ Apt. _____

City, State, Zip _____

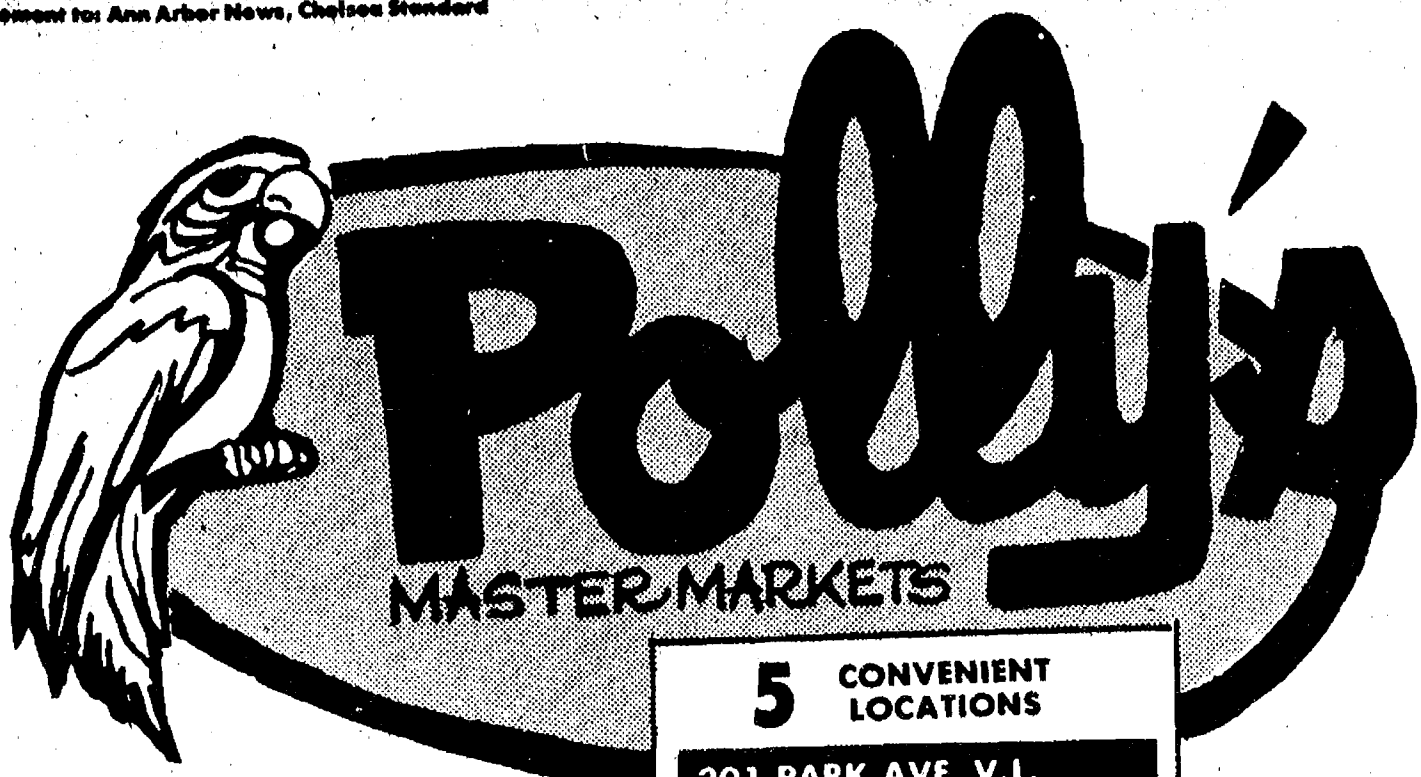
Account No. _____ Phone _____

☐ Charge ☐ Check or M. O. \$ _____ enclosed.

Sorry, no C.O.D.'s or phone orders. Please include Michigan Sales Tax.

Your name and address custom printed on genuine vellum paper that is subtly deckle edged in the manner of fine books. Paper choice in Windsor White, Antique Grey or Wedgewood Blue. Choice of print styles HL or MC as shown with ink color in deep grey, blue or raspberry red. Choose 100 Princess sheets, 100 envelopes or 100 King size sheets, 100 envelopes.

Special Bonus: 50 extra, unprinted sheets for use as second pages... only \$2 with order.



5 CONVENIENT
LOCATIONS
201 PARK AVE. V.L.
1821 SPRING ARBOR RD.
960 NORTH WEST AVE.
1809 EAST MICHIGAN
1101 M-52, CHELSEA



5 CONVENIENT
LOCATIONS
201 PARK AVE. V.L.
1821 SPRING ARBOR RD.
960 NORTH WEST AVE.
1809 EAST MICHIGAN
1101 M-52 CHELSEA

get to know us...
WE CAN HELP YOU SAVE ON YOUR FOOD BILL!

Open Daily 8 to 10
Sunday 9 to 9

- ★ **QUALITY PRODUCE**
- ★ **QUALITY MEAT**
- ★ **COLD BEER, WINE,**
- ★ **LIQUOR**
- ★ **LOTTERY TICKETS**
- ★ **SIDES OF BEEF**
- ★ **FRUIT BASKETS**
- ★ **DRY CLEANING**
- ★ **PHOTO PROCESSING**
- ★ **VARIETY AT LOW PRICES**



5 CONVENIENT
LOCATIONS
201 PARK AVE. V.L.
1821 SPRING ARBOR RD.
960 NORTH WEST AVE.
1809 EAST MICHIGAN
1101 M-52 CHELSEA



5 CONVENIENT
LOCATIONS
201 PARK AVE. V.L.
1821 SPRING ARBOR RD.
960 NORTH WEST AVE.
1809 EAST MICHIGAN
1101 M-52 CHELSEA



5 CONVENIENT LOCATIONS
 201 PARK AVE., V.I.
 1821 SPRING ARBOR RD.
 960 NORTH WEST AVE.
 1809 EAST MICHIGAN
 1101 M-52 CHELSEA



STEAK

FOR THE GRILL

CHOICE WHOLE
BEEF LOINS
 40/50-LB. AVERAGE
\$1.99
 LB.
 CUT and WRAPPED

- CHOICE BEEF BONELESS **CHUCK STEAK** LB. **\$1.39**
- CHOICE BEEF **SIRLOIN STEAK** LB. **\$2.19**
- CHOICE BEEF BONELESS ARM-CUT **SWISS STEAK** LB. **\$1.39**
- CHOICE BEEF **EYE-O-ROUND** LB. **\$2.59**
- CHOICE BEEF **T-BONE STEAK** LB. **\$2.69**
- CHOICE BEEF **PORTERHOUSE** LB. **\$2.79**



TYSON SPLIT
FRYER BREASTS
99¢
 LB.

EXTRA LEAN
 QUARTERED
PORK LOINS
\$1.39
 LB.

SAVE 34¢ WITH IN-STORE COUPON
HYGRADE BALLPARK FRANKS
\$1.35
 LB.

SAVE 34¢ WITH IN-STORE COUPON
HYGRADE BALLPARK BOLOGNA
\$1.35
 LB.

- WILSON SAVORY **BACON** LB. PKG. **99¢**
- ECKRICH **SMOKED SAUSAGE** LB. PKG. **\$1.59**
- ECKRICH SLENDER **SLICED MEATS** 3-OZ. PKG. **59¢**
- HERRUD **SMOKIE LINKS** 10-OZ. PKG. **99¢**
- HERRUD HICKORY HOST **FRANKS** LB. PKG. **\$1.19**



CHOICE BEEF
 BONELESS
CHUCK ROAST
\$1.29
 LB.

CHOICE BEEF
 BOTTOM
ROUND ROAST
\$1.59
 LB.

FRESH GROUND
GROUND BEEF CHUCK
\$1.19
 LB.

EXTRA LEAN
STEW MEAT
\$1.59
 LB.

Small and Lean
 FARMER PEETS
SMOKED PICNICS
 (WATER ADDED)
79¢
 LB.

SLICED and TIED
 LB. 85¢

FARMER PEET SMOKED **PICNIC SLICES** LB. **99¢**

HONEY SWEET
HONEYDEW MELONS
69¢
 EA.

- HOME GROWN **RHUBARB** LB. **29¢**
- GOLDEN RIPE **BANANAS** 4 LBS. for **\$1.00**
- JUICY **LIMES** EA. **10¢**
- FRESH **CARROTS** 2-lb. Bag **39¢**
- SNO-WHITE **MUSHROOMS** LB. **99¢**

GOLDEN
SWEET CORN
10¢
 EAR



BORDEN 1/2%

LO-FAT MILK

PLASTIC GALLON

\$1.09

Polly's
MASTERMARKETS

5 CONVENIENT LOCATIONS
201 PARK AVE., V.L.
1821 SPRING ARBOR RD.
960 NORTH WEST AVE.
1809 EAST MICHIGAN
1101 M-52 CHELSEA

8-PAK
NO-DEPOSIT/NO-RETURN

COCA-COLA

16-OUNCE BOTTLES

\$1.69



SAVE 24¢ WITH IN-STORE COUPON
POST SUPER

SUGAR CRISP

18-OZ. **89¢**

SAVE 15¢ WITH IN-STORE COUPON
2-QUART UNSWEETENED

HAWAIIAN PUNCH

10 PKGS. **\$1.00**

SAVE 40¢ WITH IN-STORE COUPON
JOHNSON'S DISPOSABLE

TODDLER DIAPERS

12-CT. **\$1.89**



MORTON COUNTRY FRIED

CHICKEN
\$1.77

32-oz.

JOHNS PIZZA

Sausage, Cheese
Pepperoni or Hamburg

14-oz.

79¢

BUY 2-SAVE 80¢ WITH IN-STORE COUPON
BORDEN
Old Fashioned
ICE CREAM
(EXCEPT BUTTER PECAN)

BORDEN
FROZEN YOGURT
PINT **49¢**

BORDEN
SUNDAE CONES
6 PAK **79¢**

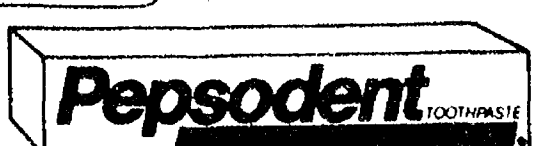
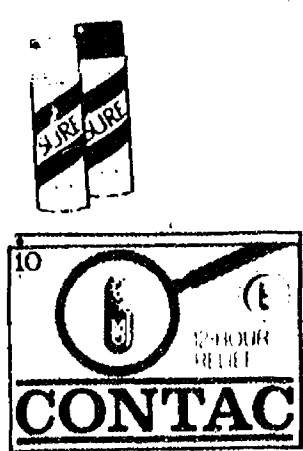
BORDEN
DELUXE QUARTS
QT **89¢**

SUNNY DELIGHT
TROPICAL JUICE 64 oz. **69¢**
SCOTLAND
INSTANT TEA 30 oz. **\$1.69**
MARDI GRAS
NAPKINS 140-ct. **49¢**
MINUTE MAID CHILLED
LEMONADE 64-oz. **59¢**
MINUTE MAID CHILLED
FRUIT PUNCH 64-oz. **59¢**

BORDEN
FRUIT DRINKS HALF-GALLON **39¢**
BORDEN PURE
ORANGE JUICE HALF GALLON **99¢**
BORDEN SOUR CREAM
CHIP DIPS 2 8-oz. for **89¢**
HOLSUM
HOT DOG BUNS 12-ct. **59¢**
BIRDSEYE
AWAKE 2 12-oz. for **89¢**

SAVE OVER \$5.00
WITH POLLY'S IN-STORE COUPONS!

SAVE 20¢ WITH IN-STORE COUPON
WIN SCHULERS
BAR SCHEEZE 8-oz. **83¢**
SAVE 14¢ WITH IN-STORE COUPON
JIFFY
BAKING MIX 40-oz. **59¢**
SAVE 15¢ WITH IN-STORE COUPON
BRAUNNY
PAPER TOWELS JUMBO ROLL **55¢**
SAVE 30¢ WITH IN-STORE COUPON
JAY'S TWIN-PAK
POTATO CHIPS 1-LB. BOX **\$1.09**
SAVE 30¢ WITH IN-STORE COUPON
PINK BEAUTY
PINK SALMON 15 1/2-oz. **\$1.59**
SAVE 30¢ WITH IN-STORE COUPON
GLAD
TRASH BAGS 10-ct. **89¢**
SAVE \$1.50 WITH IN-STORE COUPON
FRISKIES
SAUCE CUBES 25-LB. **\$4.59**



30¢ OFF LABEL
PEPSODENT
Toothpaste
6 1/2 oz. **88¢**

15¢ OFF LABEL
CREST
TOOTH PASTE

7-OZ. **98¢**

CONTAC
12-HOUR RELIEF CAPSULES

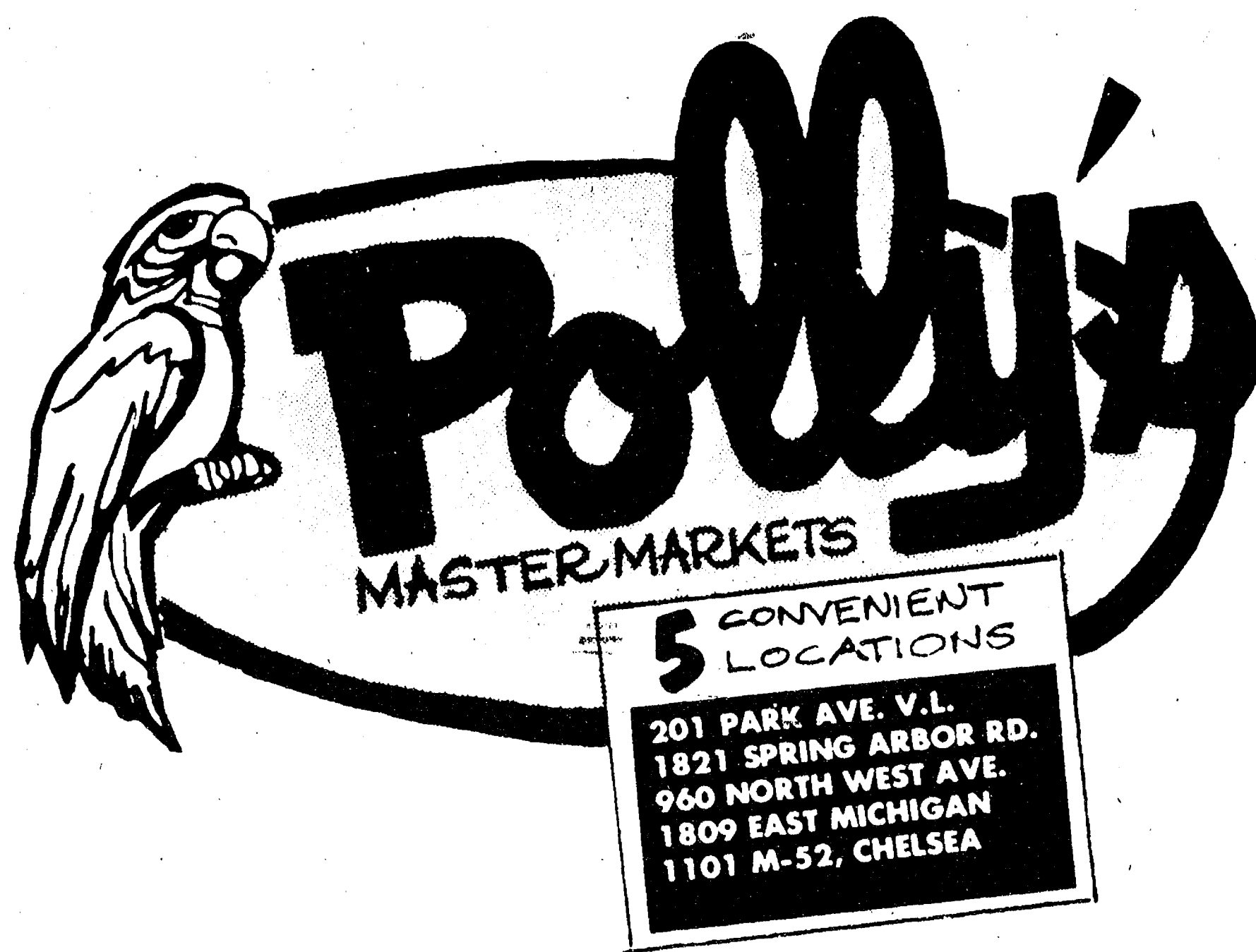
10-CT. **\$1.19**

25¢ OFF LABEL
SURE
ANTI-PERSPIRANT SPRAY

8-OZ. **\$1.32**

Thank You

FOR SHOPPING AT...



WHERE WE ARE
HAPPY TO.....

save YOU MONEY!